

SAVELLI TECHNOLOGIES S.R.L.



Powering the Foundry



www.savelli.it

Company associated with:



Profile & Qualification 2025

PREAMBLE | TECHNOLOGIES FOR SUSTAINABLE FOUNDRY OPERATIONS

SAVELLI, company legal name **Savelli Technologies S.r.l.** and registered trademark "**SAVELLI since 1842**", is a boutique company developed in a small international Group and a technological competence center for foundry equipment. SAVELLI's mission is to develop the best technological solutions for the **Cast Metal Industry**, mainly for foundries which operate with the "**Green Sand Molding**" process, the most convenient system to produce high volumes of quality castings. Company's approach is "Green" and based on environmental protection and this is evident from how it produces the energy consumed during daily operations through a photovoltaic system located on the roof of SAVELLI headquarters in Rodengo Saiano (BS), Italy and especially how it automates its products with low energy consumption and energy recovery solutions. Foundry process is characterized by high complexity and Foundrymen... >>>



>>> ...dream simpler castings' design and shape, flexible production connected in real time to their customers' requirements, fully automatic systems for which the scrap-rate is always zero, for which Robots carry out most of activities and the energy is provided by renewable resources; this fantastic time will probably come but not so soon. In the meantime, SAVELLI is supporting its customers to link Preventive Maintenance and Spare-parts Inventory and is working with them for new data collection systems (telemetry for **predictive maintenance** through a **SMART intelligence**). SAVELLI commitment is to better interpret the needs of Foundrymen and to develop high-performance energy saving systems and new green technologies for easier and more sustainable Foundry operations.



Francesco Savelli
President & CEO / Partner



ALUMINUM

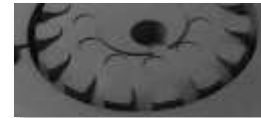


CAST IRON



STEEL

EXAMPLES OF GREEN SAND MOLDS



POWERING THE FOUNDRIES PRODUCING IRON, STEEL AND ALUMINUM CASTINGS FOR ALL THE INDUSTRIES

SAVELLI, located in Brescia northern Italy, is an historical Italian supplier of equipment, machines and plants for the "Green Sand" Foundry Industry; it designs and produces tight flask molding lines and sand preparation and return systems.

SAVELLI mission is to facilitate the Cast Metal Foundry process characterized by high complexity, supplying the best machineries and plants 4.0 in the name of technological innovation and environmental sustainability.

SAVELLI designs and customizes equipment around the casting!

1970 > Luigi, Severino and Giuseppe Savelli start to manufacture foundry green sand molding equipment with **Savelli S.p.A.**
1977 > development of the first flask-less cooling house
1979 > first green-field complete new cast-iron foundry for IDA Kikinda General Motors
1980 > acquisition of **STERN** molding and born of **Euroimpianti** (JV between Savelli and Montini foundry)
1986 > Maurizio Botticini starts as SAVELLI designer
1992 > 1st generation **Formimpress®** model-side compaction at the steel foundry FAR, Italy
1998 > complete new cast-iron foundry for **Brembo** in Mapello, Italy to produce brake disks (280 molds/hour)
1999 > new 250 molds/hour molding line for **LUK** in Brazil and JV with Kuettner (Savelli do Brasil) | **Francesco Savelli** starts in Marketing & Sales Department for international business | New 35.000 sqm manufacturing facilities in via Cacciamali, Brescia

2016 > Francesco Savelli starts the new **Savelli Technologies S.r.l.** with the best Savelli S.p.A. technicians and employees (26 people) in April | Large order from **RUSAL** for new foundry in Siberia
2017 > January - acquisition of 55% shares by **Kuettner Holding**; in March acquisition of Savelli S.p.A. business unit with IP and trademark with support of **EMI**, Cleveland
2018 > large order from **VW-SCANIA** for production of engine blocks and cylinder heads in Sweden
2019 > Savelli Machinery India Pvt. Ltd. | Reached status of Cribis D&B Prime Company
2020 > Savelli Holding S.r.l. with 50% shares
2021 > € 21,3 ML turnover with 38 employees
2023 > Reached € 78,5 ML orders' portfolio | **Savelli Machinery Mexico SA de CV** together with Patricio Gil
2025 > Reached € 37 ML turnover with 45 people | **Savelli Machinery USA Corp.** in WI together with Patricio Gil | SAVELLI is an **historical trademark of national interest**

From Italian local manufacturer to an international 1st class Foundry Equipment supplier - Franciacorta territory and culture

Native citizens of FRANCIACORTA area distinguished themselves in painting, music, literature and agriculture...; this area of northern Italy, with its gentle hills and sweet climate, was also the area of "brüsafer", the iron craftsmen. SAVELLI originates from the handicraft activity carried out by Mr. Egidio Savelli, a brüsafer craftsman, who set up a workshop in Franciacorta in 1842.



SAVELLI workshop (1842>1950)

1800

1842 > Egidio Savelli, "brüsafer" iron craftsmen & blacksmith, starts the activity in territory of **Franciacorta**, Brescia, Italy
1890 > Manufacturing of agricultural tools



Savelli Technologies S.r.l. | CONFIDENTIAL

1900

2000

2001-2006 > Partnership with **DISA** (Best of both Worlds)
2007 > largest molding line with flask dimension of 3.000 x 1.800 x (500/500) mm for Altajavagon zavod
2008 > large flask molding line 1.300 x 1.100 x (250/250) mm with high speed of 250 molds/hour to produce brake disks at **Renault-Nissan** foundry in Le Mans, France
2011 > largest cast-iron mold unit in the world for **Deere & Company** in Waterloo, Iowa | Reached € 60 ML turnover
2016 > Insolvency of Savelli S.p.A. in February

2016-2025

MARCHIO
HISTORICO
TRADEMARK
STORICO

SAVELLI > HISTORICAL TRADEMARK OF NATIONAL INTEREST

Recently, SAVELLI trademark was officially recognized as one of the few (less than 900 in the entire country) **Italian Historical Trademark of National Interest** by the **Ministry of Enterprises and Made in Italy** (UIBM - Ufficio Italiano Brevetti e Marchi). The Special Register of Historical Trademarks of National Interest, established in 2019 MISE, champions 'Made in Italy' and celebrates Italian trademarks that have a long historical tradition, i.e. ones which have been registered for at least 50 years, and can demonstrable at least fifty years' continuous use in industry and commerce. Main advantages for the company are:

- **Enhanced protection:** Registration provides special protection to the brand, making it more difficult to copy or imitate.
- **Use of the "Historical Brand" logo:** Companies can use the exclusive logo MARCHIO STORICO with Italy for commercial and promotional purposes, alongside their distinctive brand.
- **Access to the Business Safeguard Fund:** Registered companies can access a special fund to deal with periods of crisis or difficulty (the Italian Government can enter with a minority stake in the company to support).
- **Enhancement of the brand as an intangible asset:** Registration strengthens the reputation and increases the economic value of the brand, making it more attractive to investors and financing.
- **Promotion of Made in Italy:** The historical brand becomes a symbol of Italian excellence, helping to enhance Made in Italy in the world.
- **Access to financing:** Registered companies can have access to subsidized financing for the enhancement of the brand and its promotion.
- **Protection from imitations:** Registration guarantees the protection of the brand, preventing others from using similar names or symbols that could confuse consumers.
- **Exclusive right to use the brand:** Registration grants the exclusive right to use the brand, preventing improper use by third parties.
- **Possibility of exploiting the brand:** If the historic brand is granted to third parties, it is possible to exploit it economically.



YEAR 2025

MAT
FOUNDRY
GROUP LTD

SAVELLI historical background consists of developing complete or partial cast-iron foundry plants using the "Green Sand" process, supplying large packages of equipment including horizontal flask molding lines and sand preparation and return systems (punch-out and shake-out systems included). Decades of experience in the field of brake discs and drums production (huge number of references) > Here an example of complete plant to produce brake drums and industrial disks installed in Mexico for **MAT Foundry Group** in 2024 and currently under commissioning and start-up...



F1 Formimpres® molding machine



F1 horizontal flask molding line



Sand mixer SGMT 3250



Sand plant 120 tons/hour



Sand plant 120 tons/hour



Polygonal screen SP 100

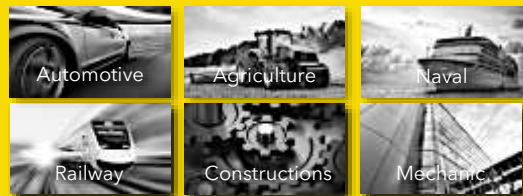


Sand cooler SK 90

MAIN CHARACTERISTICS:

- > Mold's dimensions > 1.250 x 750 x (350/250) mm
- > Production rate > 120 molds per hour
- > Cycle time > 30 seconds
- > Cooling time > in flask up to 7 hours
- > Compaction process > Formimpres®
- > Sand plant capacity > 120 tons per hour

SAVELLI is focused on serving foundries all over the world and its experts can design and produce complete "Green Sand" customized mold units to produce iron, steel and aluminum castings for all the main industries.



Despite the strong electrification of cars in Europe to the detriment of the internal combustion engine, the automotive industry remains the main one for SAVELLI's product.

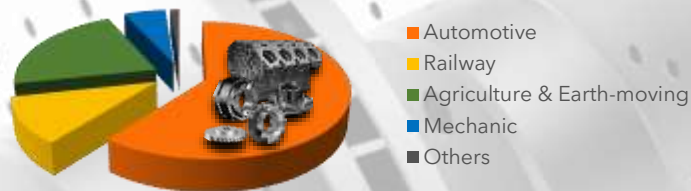
The production of **large engine blocks, brake discs and drums** does not decrease and has motivated customers such as VW SCANIA, Brembo, Hyundai Sungwoo, Castings PLC and MAT Foundry Group to invest in SAVELLI technologies.

SAVELLI is more focused on high performance systems to produce large-heavy castings, core intensive...

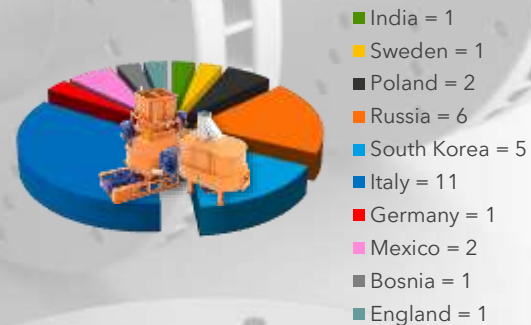
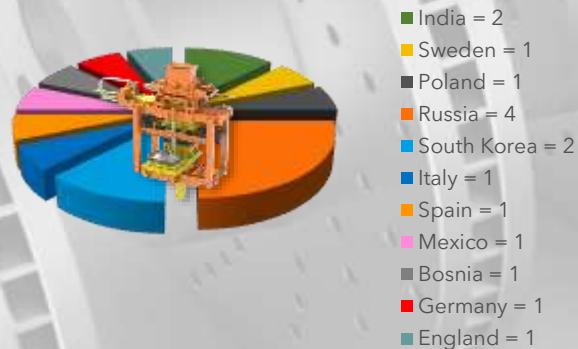


Considering the orders for large castings plants, SAVELLI remain focused on projects for the industry of heavy transport vehicles, agricultural and earthmoving machinery. Deep customization and "heavy-duty" manufacturing stay at the base of SAVELLI sales policy and business development.

Sales volume from June 2016 (more than EUR 150 million) divided per industries:



Molding & Sand equipment sold by SAVELLI per countries since 2016:





SAVELLI people with their families are the real company value

FACTS & FIGURES



➤ Nr. of direct employees = 44 including 4 Directors

➤ Board of Directors



Francesco Savelli
President, CEO



Maurizio Botticini
Vice-president, CTO



Karl Joseph Isken
Advisor for KKG



Peter Weber
Advisor for KKG

➤ Turnover
 2023 = € 14.601.185,00
 2024 = € 28.868.114,00
 2025 = € 37.409.583,00

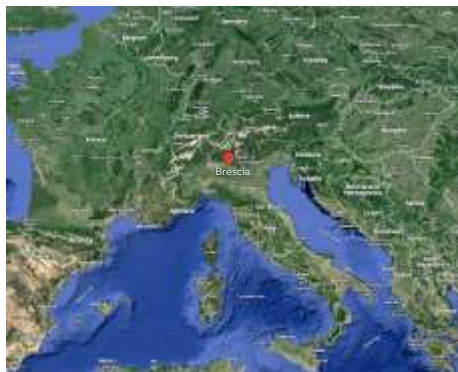
➤ Orders' portfolio = € 78.000.000,00 (in Jan. 2024)

➤ Rating **dun & bradstreet** = **2A 1** (Prime Company)

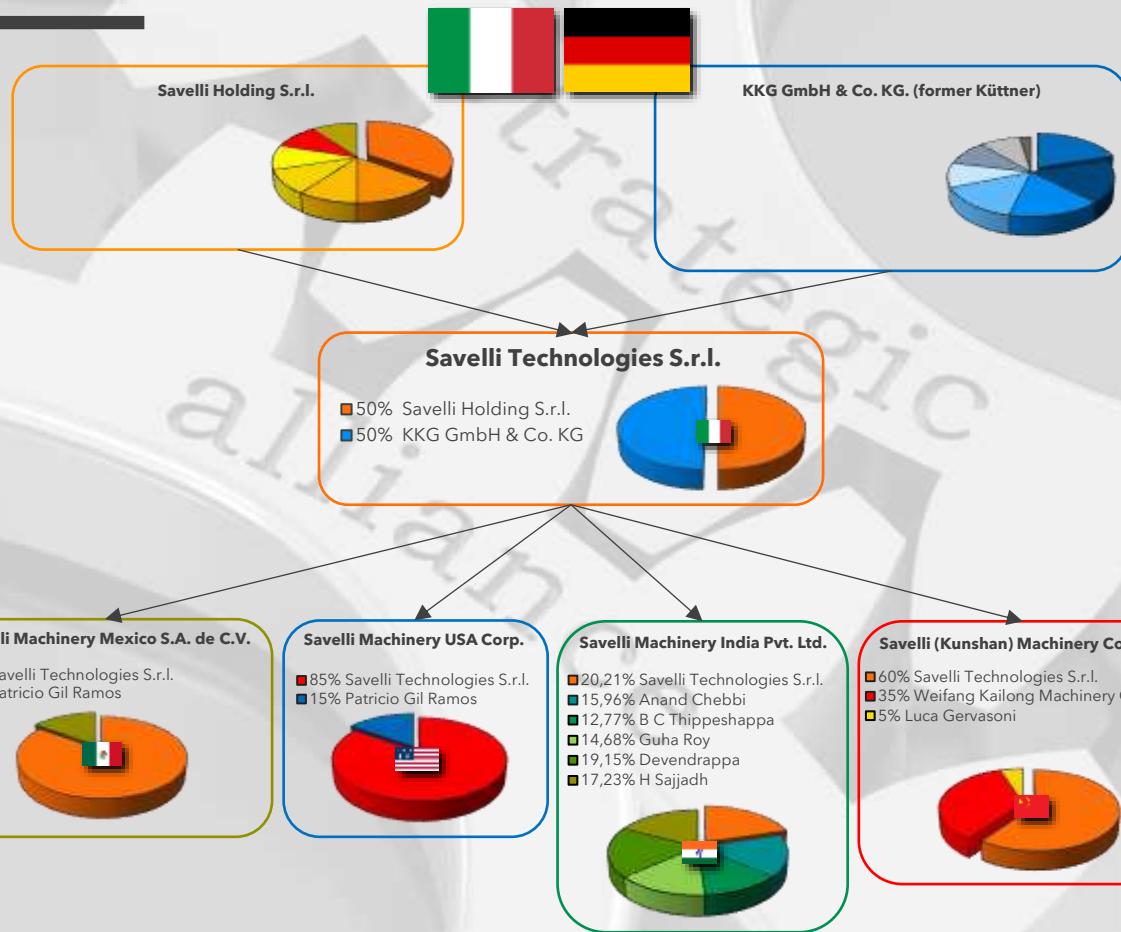
➤ Auditor = **Deloitte**.



SAVELLI headquarters are in Rodengo Saiano, in the area of **Brescia** city called **FRANCIACORTA**, northern Italy (near Milan) > 1.000 sqm of modern offices dedicated to Sales, Engineering and Automation and a workshop of 500 sqm dedicated to spare parts business and small maintenance activity. The construction of equipment is outsourced to strategic companies in the province of Brescia; Brescia boasts of being the capital of the industrialization in Europe, since it is the only European province which is both super specialized in the secondary sector and has reached an industrial value of over 10 billion Euros, preceding in this way very important German towns such as Wolfsburg, Volkswagen area...



SAVELLI | SHAREHOLDERS COMPOSITION



Savelli Technologies S.r.l. is no longer a single entity, but it can be represented as a small multinational Group with its subsidiaries or participated companies

Savelli Machinery Mexico S.A. de C.V. (Patricio Gil)



Savelli Machinery USA Corp. (Patricio Gil & Robert Fechner)



Savelli Machinery India Pvt. Ltd. (Anand Chebbi)



萨维利 (昆山) 机械有限公司

Savelli (Kunshan) Machinery Co., Ltd. (Li Kun & Luca Gervasoni)

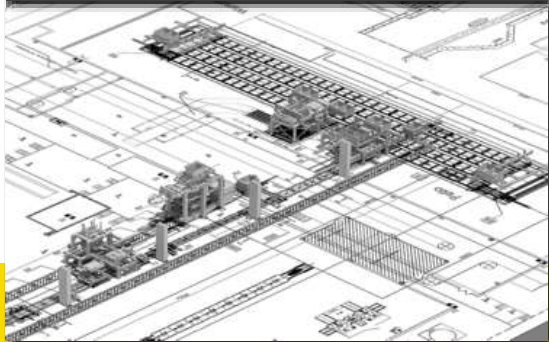


SAVELLI Group:

-   Savelli Technologies S.r.l.
-   Savelli Machinery USA Corp.
-   Savelli Machinery Mexico S.A. de C.V.
-   Savelli Machinery India Pvt. Ltd.
-   Savelli (Kunshan) Machinery Co., Ltd.
萨维利（昆山）机械有限公司

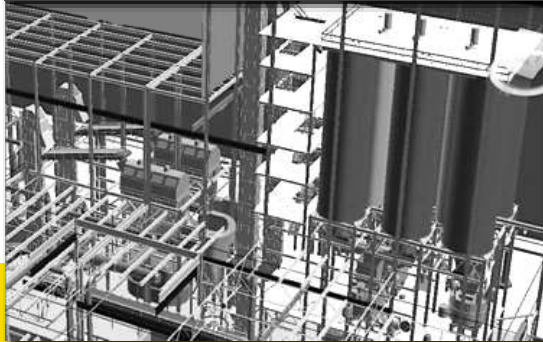


Engineering, Automation & Services



- Feasibility studies
- Concept Engineering
- Process technology
- Foundry logistics (process flow)
- General and specific layouts
- Productivity systems
- Project management
- Customer service
- Assembling and assistance
- Installation & Commissioning
- Remote assistance
- Maintenance & spare parts supply

Sand Preparation



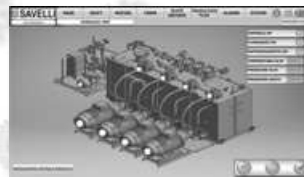
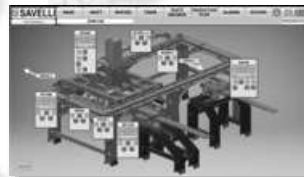
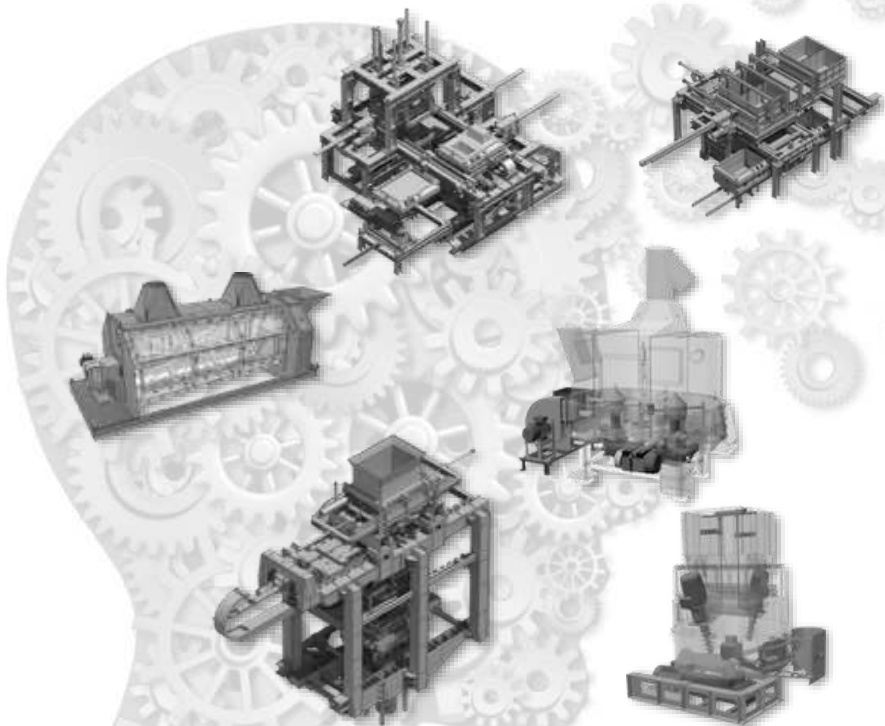
- Single machines of different sizes such as:
 - sand mixers
 - sand coolers
 - rotary cooling drums for sand and castings
 - polygonal screens
 - pneumatic injectors
 - sand testers
 - bucket elevators
 - belt conveyors
- Complete sand preparation and return systems from 40 tons up to 600 tons/hour
- Customized solutions

Horizontal Flask Molding



- Tight flask molding machines and complete molding lines, equipped with different mold's compaction systems
- Different flasks' sizes for all the types of productions (for iron, steel and aluminum castings) and different production rates up to 280 molds per hour
- Flask-less mold cooling houses with double welded steel jackets
- Electro-mechanical drives units with brush-less motors for transferring/lifting pallet cars, flasks and jackets

SAVELLI is a Foundry technology competence center with 12 designers, 7 programmers and 10 supervisors specialized in mechanic, hydraulic, pneumatic, electric and electronic equipment installation.



Mechanical engineering department equipped with AutoCAD Mechanical 2D and Autodesk Inventor 3D; Automation department for programming, design of machine controls and HMI systems according to Industry 4.0 requirements.

In case of main contractor for molding and sand systems, SAVELLI offers:

- Feasibility Studies
- Process Technology
- Partial Foundry Logistics (process flow)
- General and specific Layouts
- Manufacturing drawings
- software and hardware projects
- operator-machine interface
- final testing and commissioning
- operator training
- data collecting systems
- tele-assistance

SAVELLI supplies complete sand preparation and return systems since 1970 and has 200 complete installed plants in operation characterized by deep customization and high performances. Larger plant installed at John Deere foundry for 600 large tons per hour.



SAVELLI realizes complete sand preparation and return systems including all the type of necessary



machines such as:

- Sand mixers (type SGMT with 1 or 2 turbines and 3 ploughshares)
- AQUATEST & SANDCONTROL testers for sand temperature, moisture and compactability
- Sand coolers (type SK)
- Polygonal screens (type SP)
- Pneumatic injectors, Bucket elevators and Belt conveyors
- Cyclones, Silos, Hoppers
- Rotary Cooling Drums for sand and castings etc





SAVELLI supplies complete horizontal flask molding lines since 1970 and has more than 150 complete installed plants in operation characterized by deep customization and high performances. Faster molding lines are installed at Brembo and Renault foundries and the largest flask molding lines are installed at Altaivagon in Siberia and at John Deere in USA.



SAVELLI realizes high performance horizontal flask molding lines composed by:

- 1 or 2 molding machines (from 5 up to 280 mph)
- **Formpress®** mold's compaction process (high pressure double squeezing model-side compaction for extreme molds)
- automatic core setting with drilling and piercing devices
- automatic pouring lines
- in flask or flask-less cooling and special devices
- Flask size up to 3.000 x 2.000mm





The Foundry process is characterized by high complexity and all the Foundrymen dream better casting design and flexible production connected in real time to their customers, no limit of shape complexity, fully automatic systems, an ideal foundry world in which the scrap-rate is always zero, a perfect world in which Robots carry out most activities and the energy is provided by renewable resources; this fantastic time will come, but not so soon and, in the meantime, SAVELLI has already started to support its customers to link Preventive Maintenance and Spare-parts Inventory and it is working with them for new data collection systems (telemetry for preventive maintenance through special sensors); this is a new way to approach, but it is impossible to completely replace the human work with its competencies and skills; we cannot replace maintenance people in the foundries also because the replacement of the human factor is not sustainable for our society BUT we can help foundry operators have an easier life! Therefore, SAVELLI's commitment is to better interpret the needs of Foundrymen and develop high performance and energy saving systems and new "green" technologies for easier and more sustainable Foundry operations. SAVELLI collaborates with the company HydraPred in order to adapt the HydraPred algorithm to SAVELLI systems:

- Predictive maintenance is based on data collected by sensors, which refer to determining variables for the health of a component, plant or machinery. Based on these data, forecasts are made to prevent various kinds of situations: malfunctions, breakdowns or even irreversible situations. Still today, 80% of companies operate in corrective maintenance (production stop) and some in preventive maintenance (high costs). The goal, on the other hand, is to avoid production stops and optimize costs as much as possible, a result that can only be achieved through predictive maintenance.
- Joe, a virtual maintainer assigned to your company, monitors, predicts and plans; he does it thanks to artificial intelligence models, machine-learning and technical know-how, which allow us to predict the wear of components, consequently failures, improving the performance of the machinery, times and costs

Hydraulic station



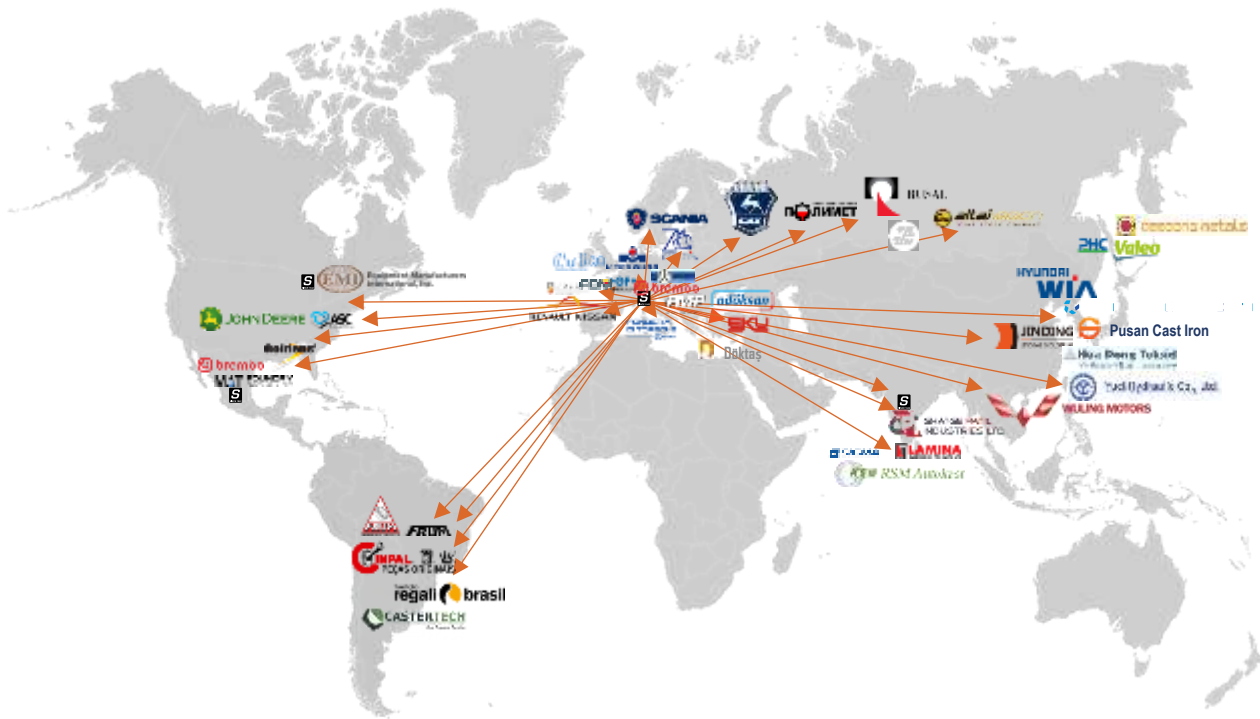
El-Mec device



SPS applied to GG foundry (to servomotors and to hydraulic station) >>> solution composed of hardware and software based on second generation artificial intelligence (Machine Learning; Deep Learning; Neural Networks) - able to define the state of wear of the asset and AUTONOMOUSLY, ISSUE SCHEDULED MAINTENANCE TASKS IN A TIMEFRAME FROM 30 TO 90 DAYS TO AVOID CATASTROPHIC EVENTS (BREAKDOWNS)



350 systems (molding lines & sand plants) installed in more than 30 different countries for primary foundries

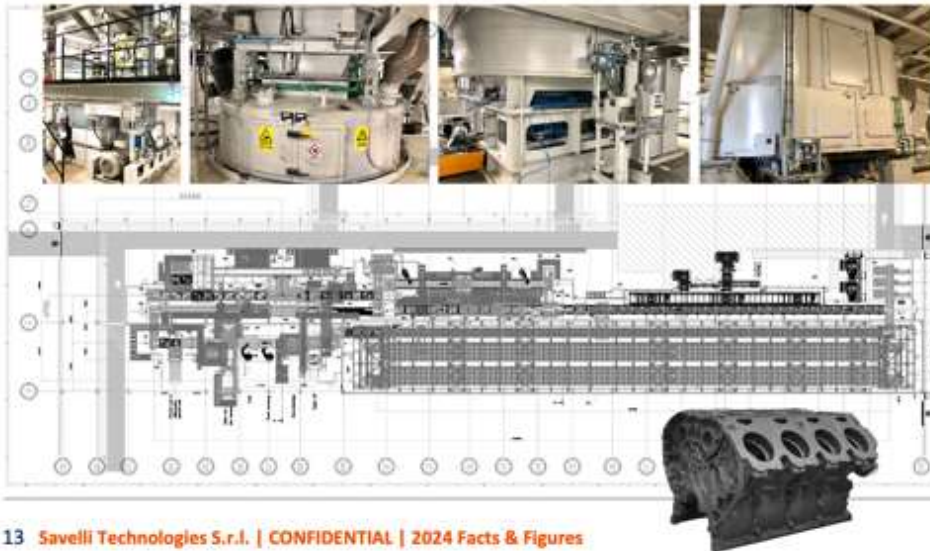


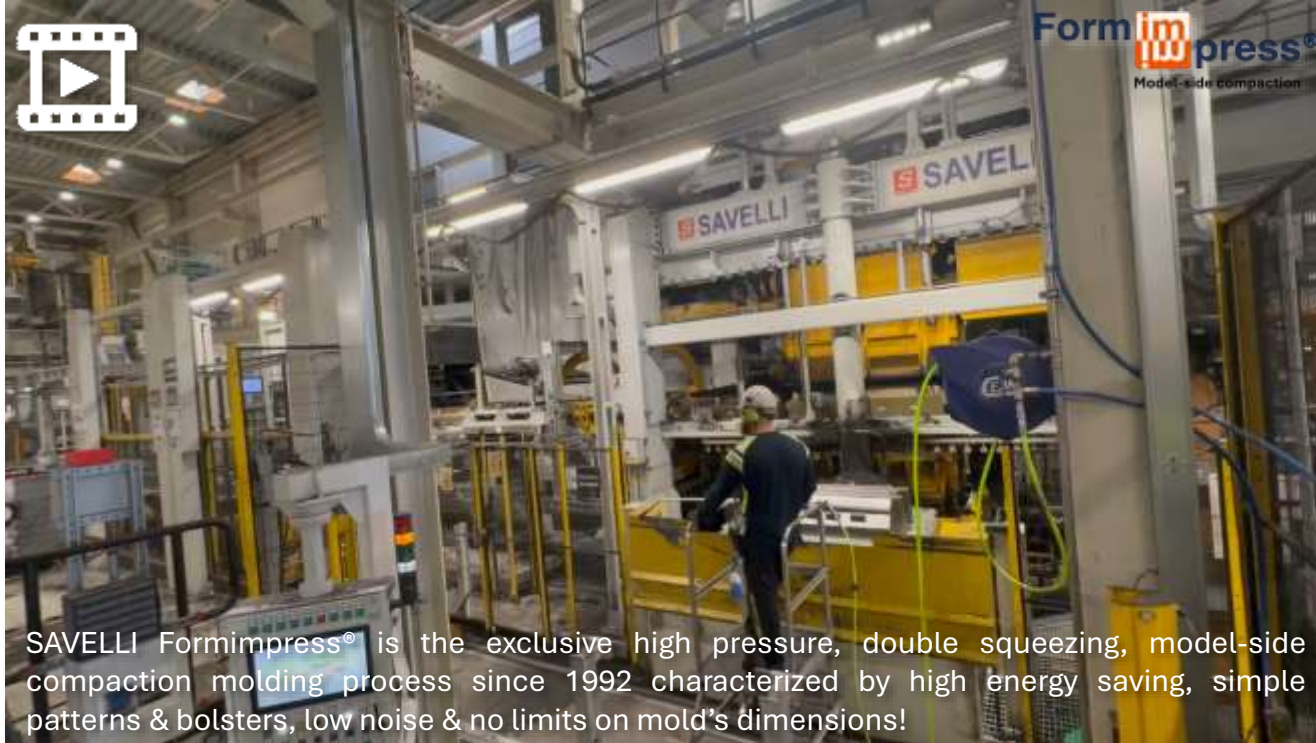
SAVELLI | special recent references | 2020

Large installation for  **SCANIA**, Sweden  | engine blocks & cylinder heads

New flask molding line and sand plant machines

- Flask size: 1.500x1.100x(450/400)mm;
- Production rate: 60 molds/hour;
- Sand plant capacity: 150 tons/hour;
- Sand mixers: 1 SGMT 1000 + 1 SGMT 5000;
- Sand testing: 2 Aquatest moisture control devices + 2 Sandcontrol devices for sand characteristics;
- Sand cooler: SK 200.





SAVELLI Formimpress® is the exclusive high pressure, double squeezing, model-side compaction molding process since 1992 characterized by high energy saving, simple patterns & bolsters, low noise & no limits on mold's dimensions!

Production of the new V8 engine block by **SCANIA** in a mold's size 1.500x1.100x900mm at the production rate of 60 molds per hour:



VOLKSWAGEN GROUP > TRATON





SAVELLI

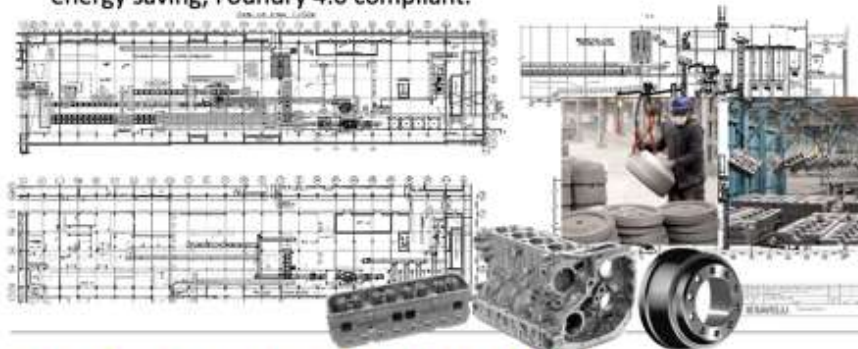


SAVELLI | special recent references | 2021

Large installation for NLZ , Russia  | engine blocks, cylinder heads & brake drums

New cast-iron foundry for **Nizhegorodskiy Liteyniy Zavod** (Russia, today GAZ) to produce cylinder blocks and cylinder heads (in-line 4- and 6-cylinders and V-shaped 8- and 12-cylinders engines). SAVELLI supplied the main equipment consisting in a new F1 molding line, new complete sand preparation & return system, new complete filtering system, shakeout and cooling systems:

- Sand plant capacity: 150 tons per hour;
- Mold's size: 1.400 x 1.100 x 900 mm;
- Production rate: 60 molds / hour;
- Mold's compaction: high pressure double squeezing Savelli Formimpress;
- Cooling time: 190 minutes (79 minutes in-flask and 102 in jackets);
- Type of drive units: horizontal and vertical SAVELLI new generation El-Mecs (electro-mechanical by SIEMENS servomotors);
- Typology: heavy-duty, complete automatic and fully integrated, high-energy saving; Foundry 4.0 compliant.





Production of the new engine blocks, brake drums & industrial disks by **Nizhegorodskiy Liteyniy Zavod** (today **GAZ**) in a mold's size 1.400x1.100x850mm at the production rate of 60 molds per hour:



SAVELLI | special recent references | 2022

Large installation for  HYUNDAI SUNGWOOD CASTING, South Korea  | brake disks & automotive castings

New high performance F1 Formimpress horizontal flask molding line:

- Flask size: 900x700x(250/250)mm;
- Production rate: 240 molds/hour

New sand preparation & return system composed by:

- SK 150 sand cooler
- SGMT 5000 sand mixer
- Sand tester: Aquatest
- Production rate: 150 tons/h
- Typology: heavy-duty
- Foundry 4.0 compliant





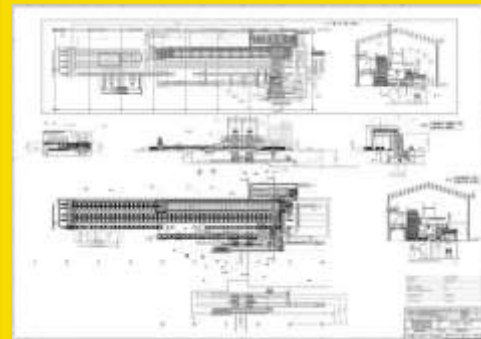
&

 **HYUNDAI SUNGWOOD CASTING** 

2022 PROJECT
F1 Molding Line 900 x 700 x (250/250) mm, 240 mph
Sand Preparation & Return System for 150 tons/hour
www.savelli.it



Production of brake disks and automotive castings by Hyundai Sungwoo in a mold's size 900x700x500mm at the production rate of 240 molds per hour:



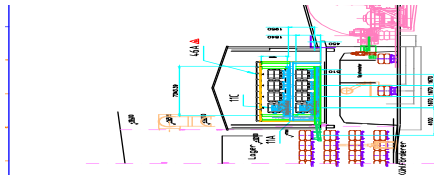


SAVELLI



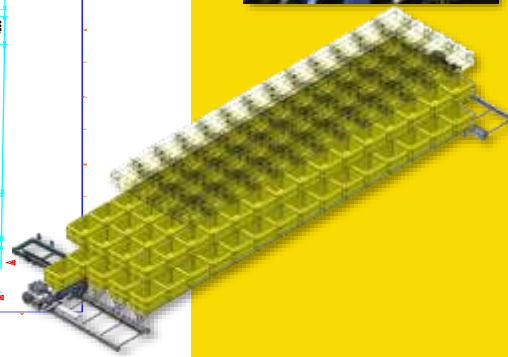
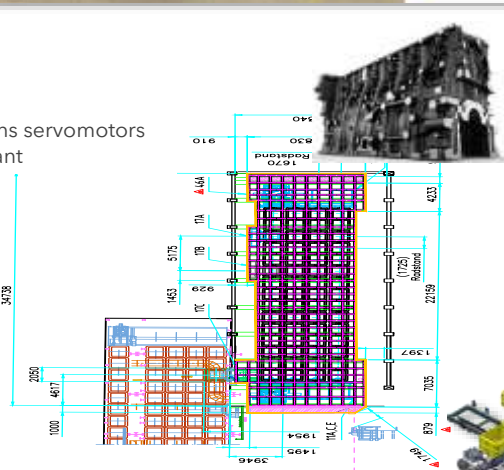
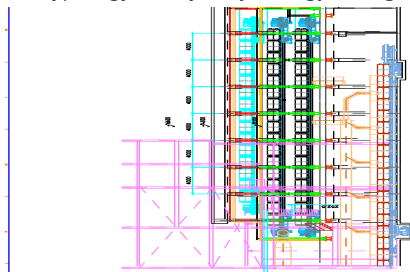
-  **Brembo** (Poland)
-  **Brembo** (Mexico)
-  **MAT Foundry Group** (Mexico)
-  **Fritz Winter Eisengießerei** (Germany)
-  **PMP Industries** (Bosnia)
-  **Elba Odöksan** (Turkey)
-  **William Lee** (England)

Replacement of 550 pairs of Heinrich Wagner Sinto flasks with new and customized flasks for the brake discs molding line and Kuenkel Wagner molding line cooling house extension with replacement of flasks also: https://www.linkedin.com/posts/fritz-winter-gmbh-u%2E-co%2E-kg_fritzwinter-stadtallendorf-ironfoundry-activity-7244344864388050944-ksNy?utm_source=share&utm_medium=member_desktop



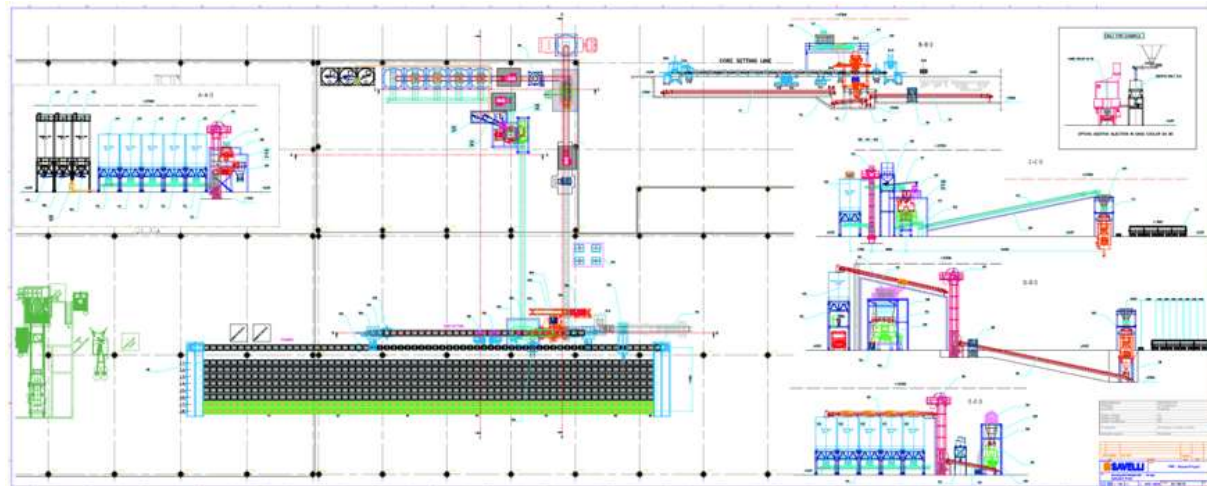
Brown-field Project: new in-flask cooling house:

- Flask's size: 1.350x1.100x(450/450)mm
- Production rate: 115mph
- Cycle time: 32 sec.
- Cooling time: in-flask up to 7 hours
- Indexing system: electro-mechanic by El-Mecs with Siemens servomotors
- Typology: heavy-duty, energy saving, Foundry 4.0 compliant



Green-field Project: new complete F1 molding line with its complete sand preparation & return system:

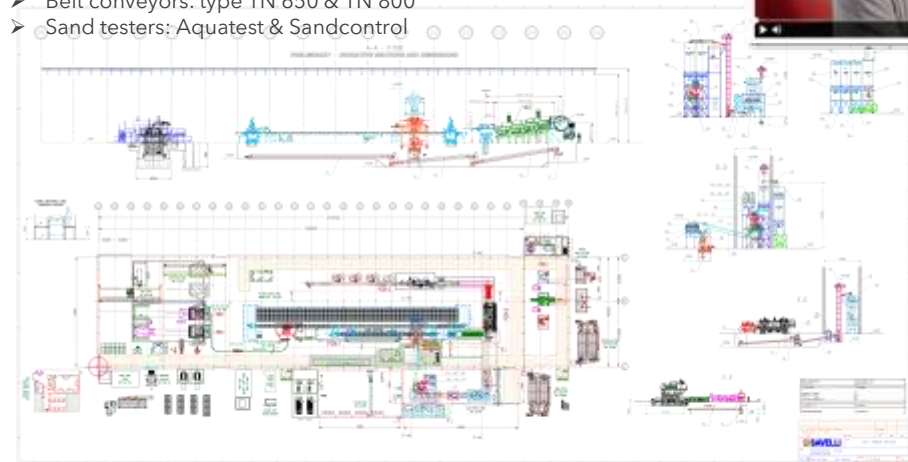
- Flask's size: 900x700x(350/350)mm
- Production rate: 120mph
- Cycle time: 30 sec.
- Cooling time: in-flask up to 7 hours
- Compaction process: Formimpress® model-side compaction
- Sand Plant capacity: 90 tons/hour
- Polygonal screen: type SP 100
- Sand cooler: type SK 90
- Sand mixer: type SGMT 3250
- Bucket elevators: type ET 600
- Belt conveyors: type TN 650 & TN 800
- Sand testers: Aquatest & Sandcontrol



Green-field Project: new complete F1 molding line with its complete sand preparation & return system:

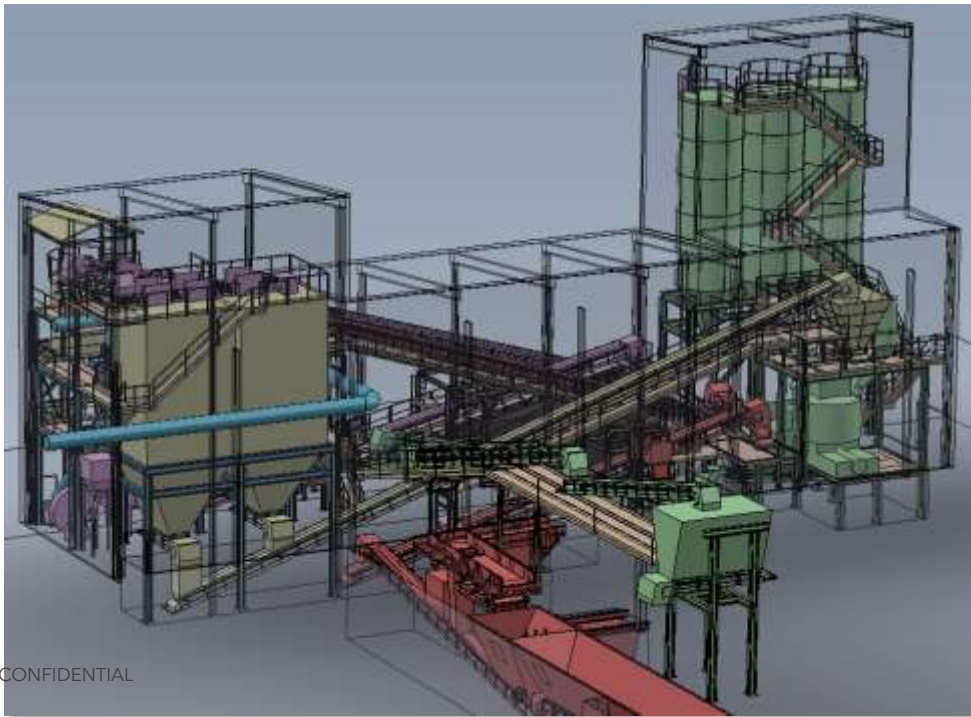
- Flask's size: 1.250x750x(350/250)mm
- Production rate: 120mph
- Cycle time: 30 sec.
- Cooling time: in-flask up to 7 hours
- Compaction process: Formimpress® model-side compaction
- Sand Plant capacity: 120 tons/hour
- Polygonal screen: type SP 100
- Sand cooler: type SK 90
- Sand mixer: type SGMT 3250
- Bucket elevators: type ET 600
- Belt conveyors: type TN 650 & TN 800
- Sand testers: Aquatest & Sandcontrol
- Sand mixer: type SGMT 3250
- Bucket elevators: type ET 600
- Belt conveyors: type TN 650 & TN 800
- Sand testers: Aquatest & Sandcontrol

<https://www.matfoundrygroup.com/video/new-foundry-announcement>



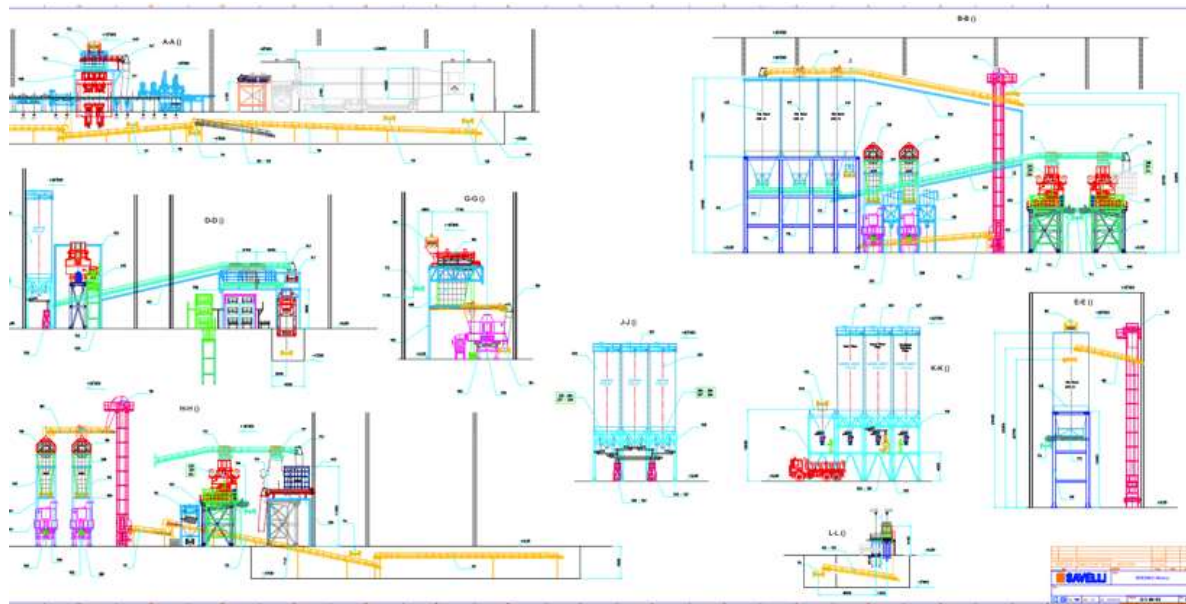
New sand preparation & return system for the production rate of 150 tons/hour to be installed at the new-cast iron foundry composed by:

- Nr. 1 polygonal screen SP 150
- Nr. 1 sand cooler SK 150
- Nr. 1 sand mixer SGMT 5000
- Sand testers type Aquatest and Sandcontrol
- Belt conveyors, etc.



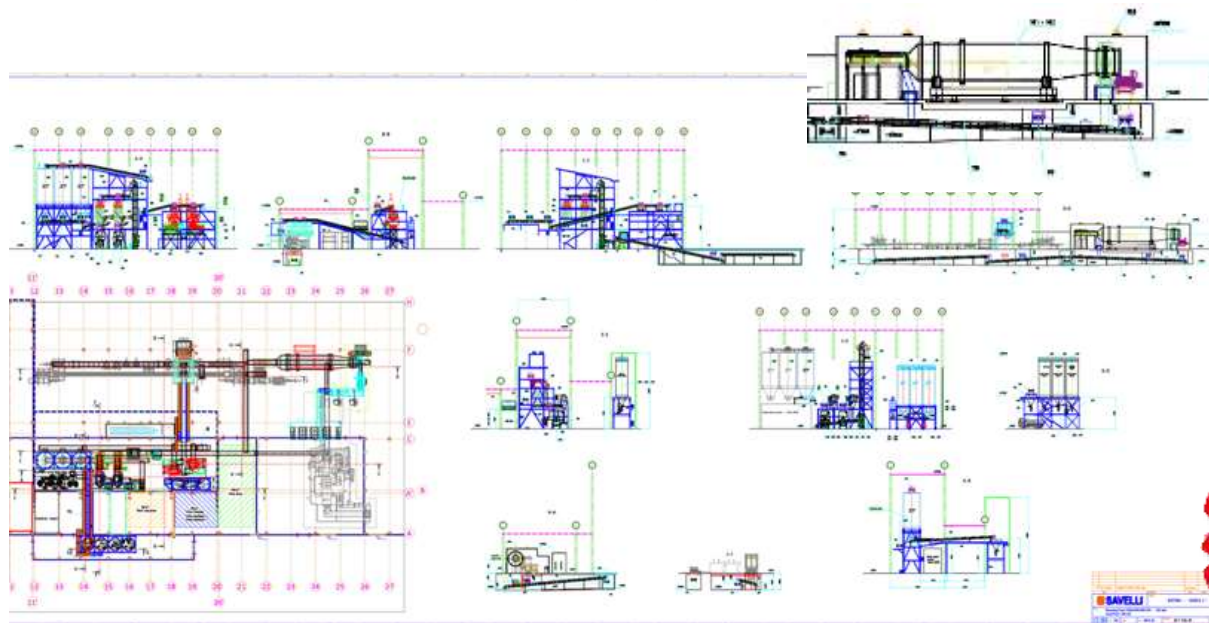
New complete sand preparation & return system + rotary cooling drum for the production rate of 340 tons/hour to be installed at the new Mexican plant MIZAR 2 composed by:

- Nr. 2 polygonal screens SP 200
- Nr. 2 sand coolers SK 180
- Nr. 2 sand mixers SGMT 6000
- Nr. 2 bucket elevators ET 1400
- Nr. 31 belt conveyors from 800 to 1400 mm
- Nr. 2 pneumatic injectors PSA 200
- Nr. 2 pneumatic transporters DN 80
- Nr. 6 Aquatest for sand moisture
- Nr. 2 Sandcontrol for sand characteristics
- Nr. 3 return sand silos for 720 m³ total
- Nr. 4 additives silos for 115 m³ total
- Nr. 2 waste dust silos for 220 m³ total
- Waste sand silo for 110 m³
- Rotary cooling drum (4.200 Ø x 25.000 mm)



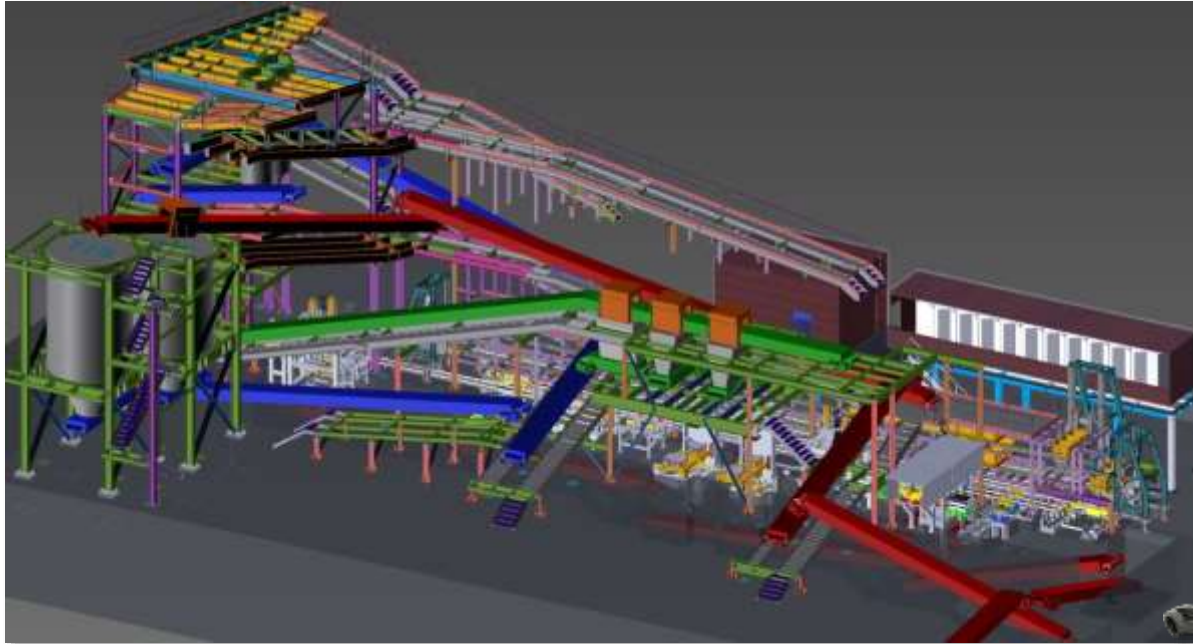
New complete sand preparation & return system + rotary cooling drum for the production rate of 330 tons/hour to be installed at the new Polish plant DOBRA 4 composed by:

- Nr. 2 polygonal screens SP 200
- Nr. 2 sand coolers SK 180
- Nr. 2 sand mixers SGMT 6000
- Nr. 2 bucket elevators ET 1400
- Nr. 31 belt conveyors from 800 to 1400 mm
- Nr. 2 pneumatic injectors PSA 200
- Nr. 2 pneumatic transporters DN 80
- Nr. 6 Aquatest for sand moisture
- Nr. 2 Sandcontrol for sand characteristics
- Nr. 3 return sand silos for 720 m³ total
- Nr. 4 additives silos for 115 m³ total
- Nr. 2 waste dust silos for 220 m³ total
- Waste sand silo for 110 m³
- Rotary cooling drum (4.200 Ø x 25.000 mm)



New complete molding line and sand preparation & return system:

- Flask's size: 800 x 600 x (275/275) mm
- Production rate: 180 mph
- Sand capacity: 120 tons/hour





Minimizing the environmental impacts of our activities is part of the corporate identity inspired by the principles of environmental protection. At SAVELLI, the environmental management is fully integrated with health and safety management, protecting the environment and the people >>>

Powering the "Green Sand" Foundry

> > > for this reason, in the contest of ESG reporting, we have installed a **photovoltaic system** that supplies electricity to our headquarters, **heat pumps** for heating and cooling the offices, new **wall boxes** to charge electric vehicles and we have developed the:

- ✓ **Ethical code:** it embodies the values, rules, ethical principles and behaviors by which our company is inspired in its activities; it is a fundamental part of the Italian "Modello Organizzativo 231", which regulates the managerial responsibilities of legal entities and companies.
- ✓ **Organizational Model 231:** it is a system of rules and procedures adopted by Italian companies to prevent crimes committed by their representatives; based on Italian law No. 231 of 2001, it assigns liability to legal entities for crimes committed in the interest of the company.
- ✓ **Whistleblowing:** it is a channel through which employees and third parties can anonymously and securely report illegal, fraudulent or unethical behavior within the company. Reports are investigated to prevent and resolve regulatory violations and promote a transparent corporate culture.

THANK YOU