



ADVANCED
ROBOTICS

ADVANCED ROBOTICS

Who we are



- Danilo Verzeletti, president of Evolut Spa until 2016 and CEO of Evolut China until 2020.
- September 2021 Advanced Robotics, founded in partnership with Edoardo and Francesco Buffoli in September 2020
- 30 years of experience in new robotic systems and service thanks to our technicians
- Synergy with several partners of the Blue Tech Hub





BUFFOLI INDUSTRIES

BUFFOLI[®]
BUFFOLI TRANSFER Sp.A

BUFFOLI[®]
BUFFOLI MECCANISMI S.r.L.



BUFFOLI[®]
NORTH AMERICA Inc.


BUFFOLI[®]
DEUTSCHLAND




Typology of robotics cells:

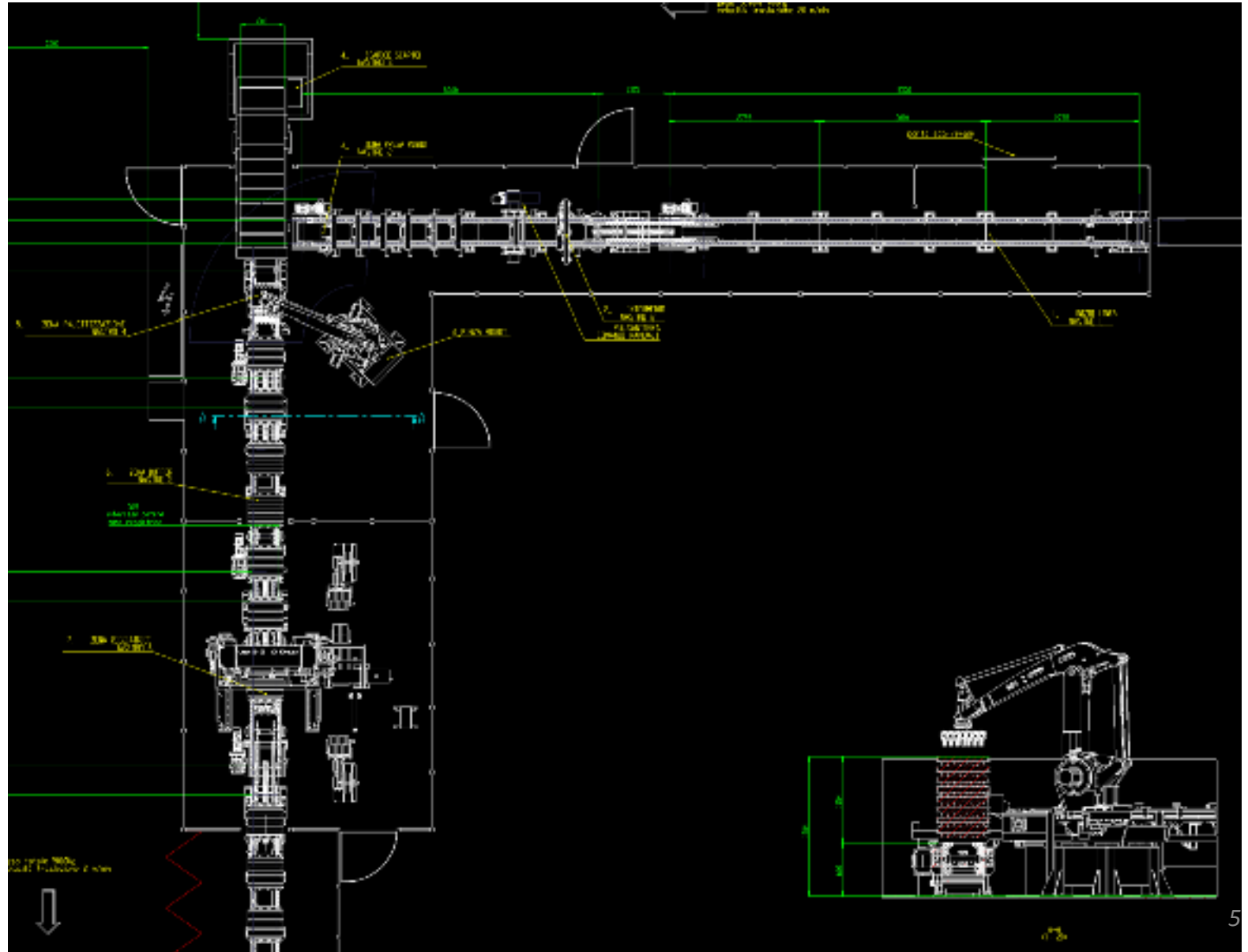


- Foundry
- Handling
- Assembly
- Palletization
- Cutting and deburring
- Robotic applications on machine tools and transfers
- Spot welding
- Quality check
- Special installation

Palletizing of aluminum ingots

Palletizing ingots from
continuous casting

Ingots orientation control
system

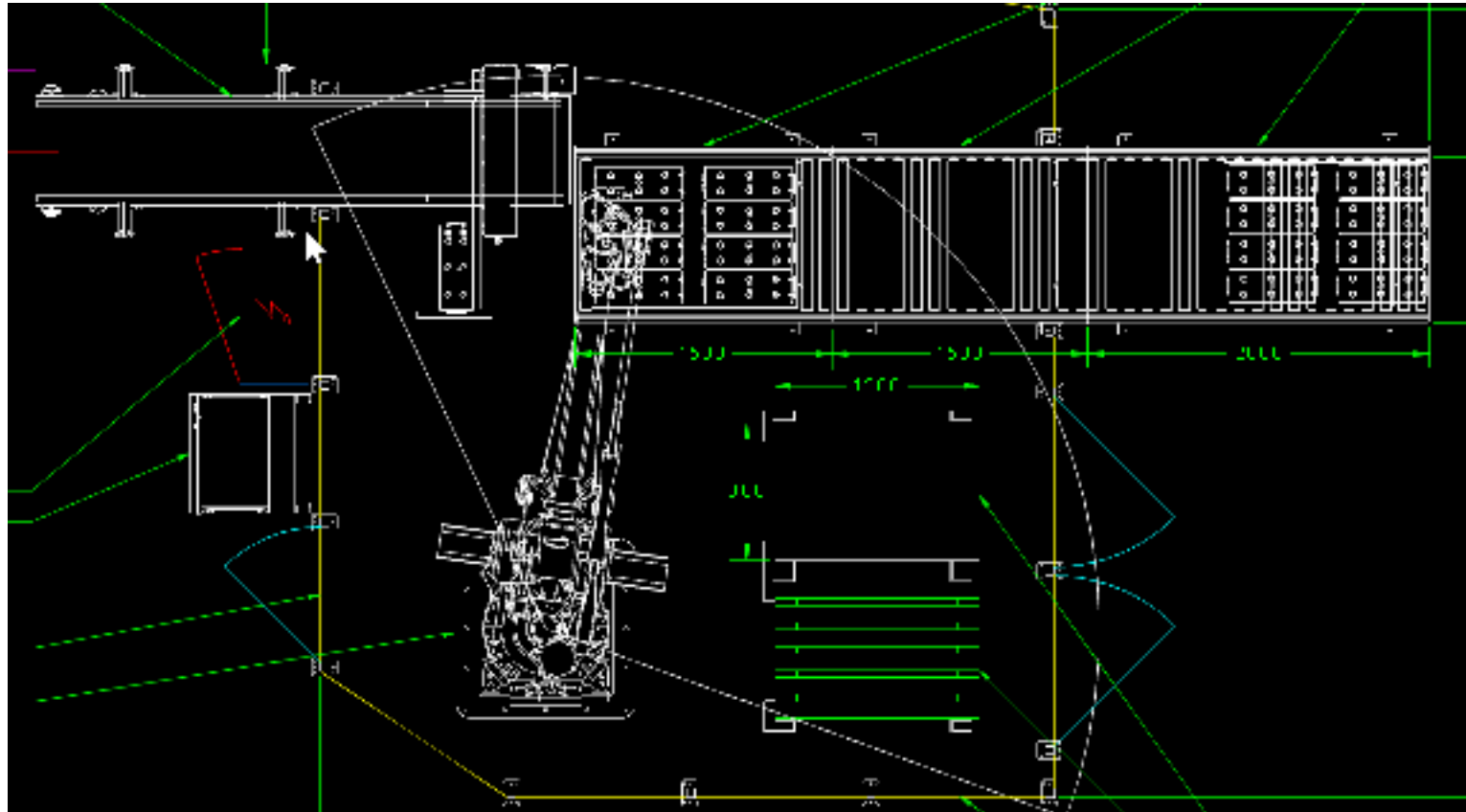
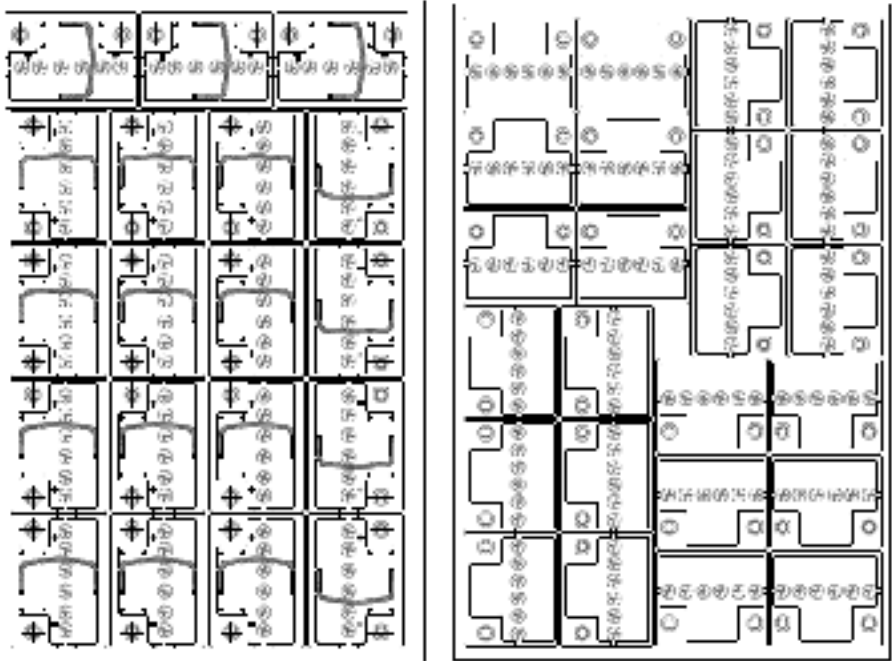


Palletizing of aluminum ingots



Palletizing batteries

- Multiple pallet configurations
- Palletizing software
- Management of different types of batteries
- Interlayer management



Robotic applications for CNC machines

Management of multiple codes

48 pieces for an autonomy of
4 hours

No experienced operators
required

Pallet with laser cut sheets.



Transfer

Transfer loading and unloading

Grip with vision systems
for transfer loading

Marking of the finished
piece



Transfer

Cycle time: 2 seconds

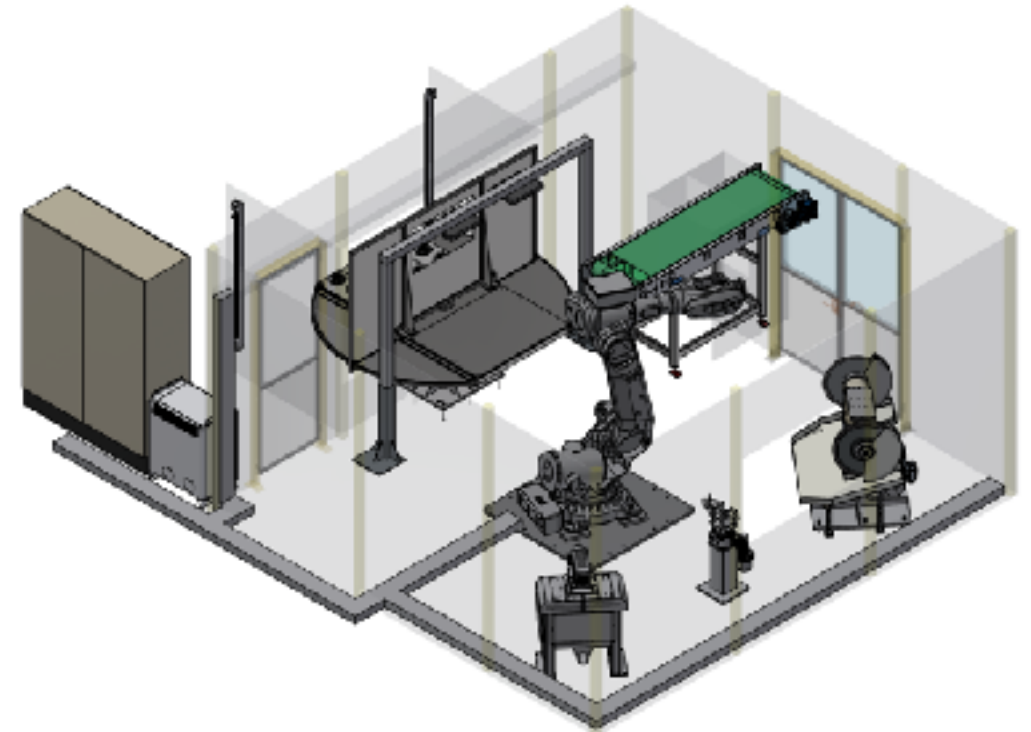
Input: Foundry crude

Output: Pallets ready for assembly



Cast iron deburring

- Rotary table and Foresight vision system for workpiece pick-up.
- Diamond grinding wheel and tip for the deburring phase
- Compensated tools and robot feedback to avoid collisions



Special Installations: Franciacorta Bottles

Handling from the refining baskets
to the remuage baskets.

24 bottles per grip

7 bar of pressure in a bottle

Precision handling without stirring
the deposited yeasts.

Soft touch process to recognize the
status of both the loading basket
and the unloading basket

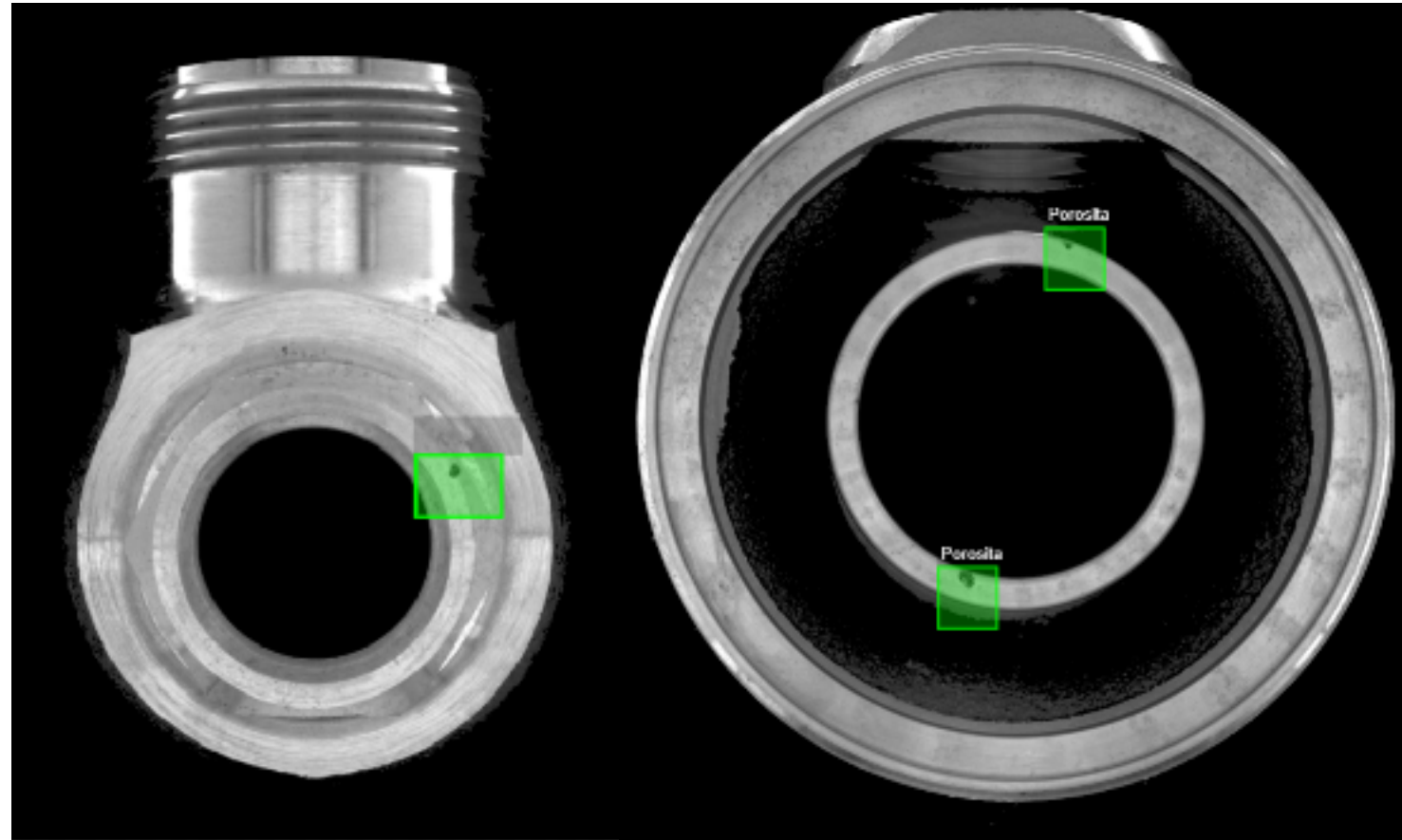


Special Installations: quality check with Artificial Intelligence

Quality check of both raw components and processed products.

Types of details controlled:

- Porosity
- Cracks
- Lack of materials
- Dents
- Burrs
- Scratches
- Vibration due to machining



Quality Robocell

Robotic cell for quality control with Artificial Intelligence:

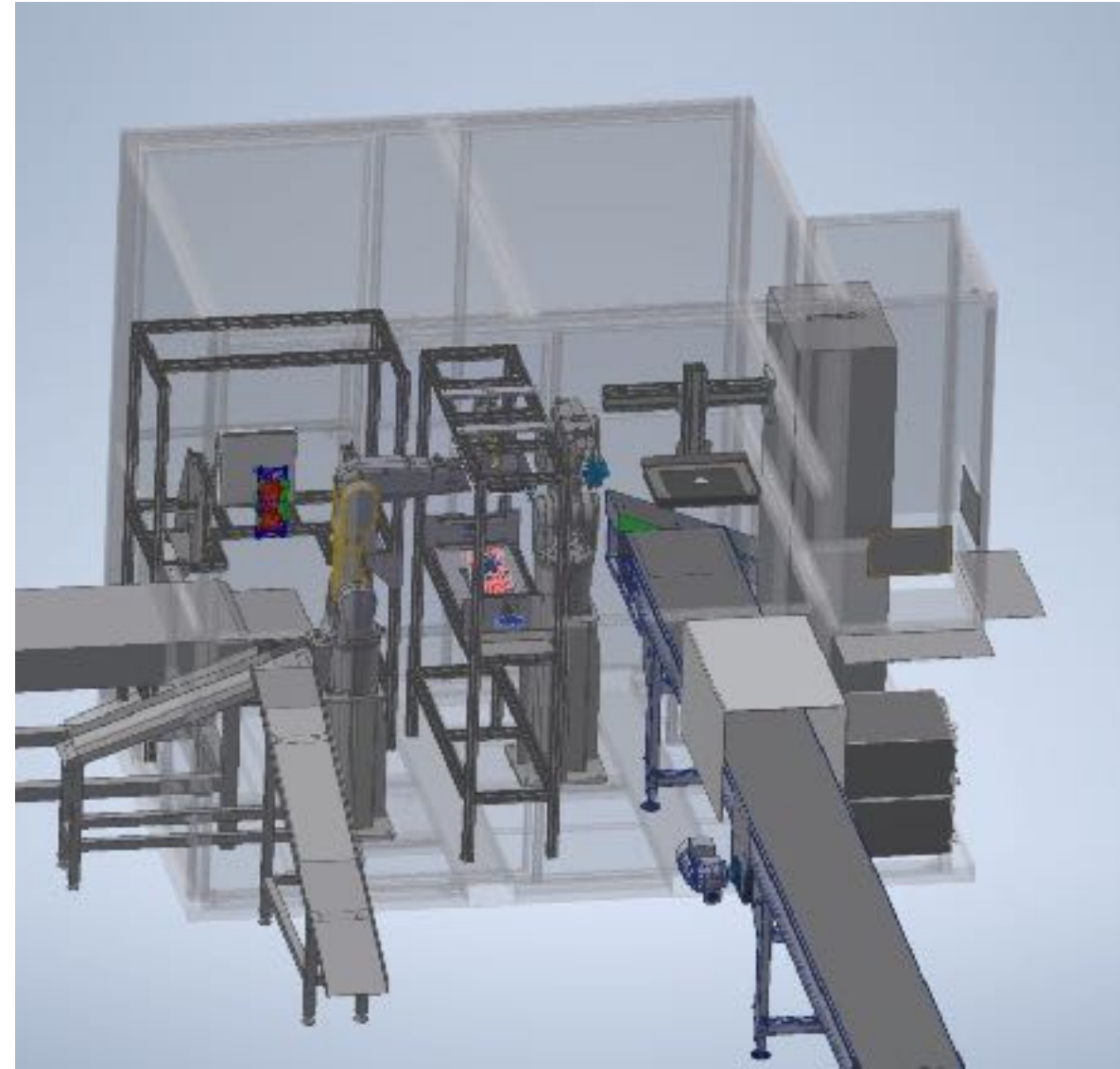
- Objective - Fast
- Repeatable - Accurate
- Track - Safe

Cloud platform or Local server for AI training

- AI training with few samples (about 50)
- Validation of models before putting them into production

Runtime

- Performance from industrial production



Defects:

*Aluminium
Flakes*



*Missing
Material*



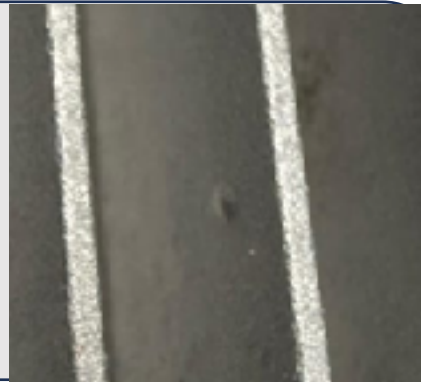
Burrs



Porosities



Bubbles



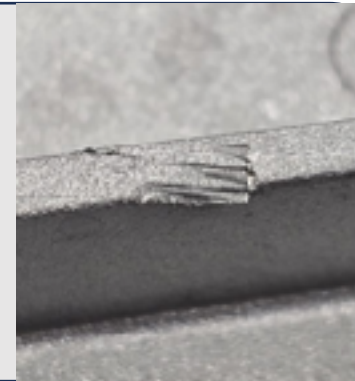
Spots



*Broken
Pins*



Dents



Examples of analysis

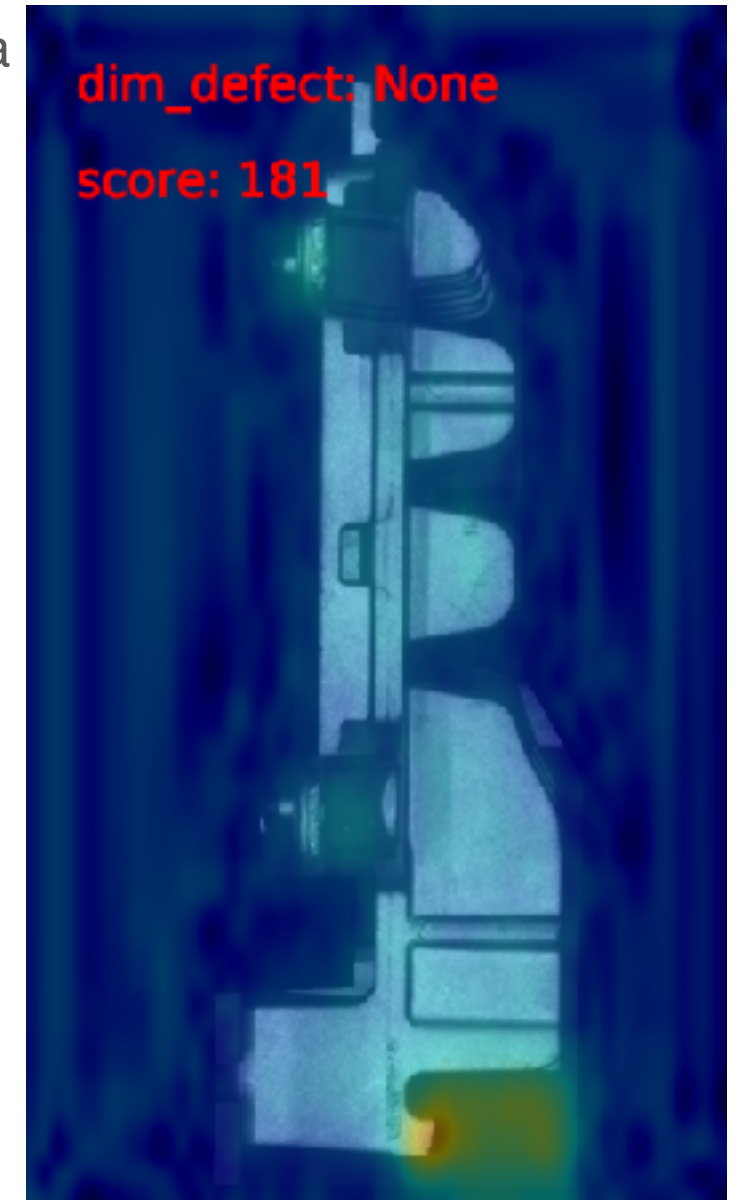


The anomaly detection model outputs a **heatmap** of the inspected part.

If the heatmap appears entirely **blue**, the part is within standard quality parameters.

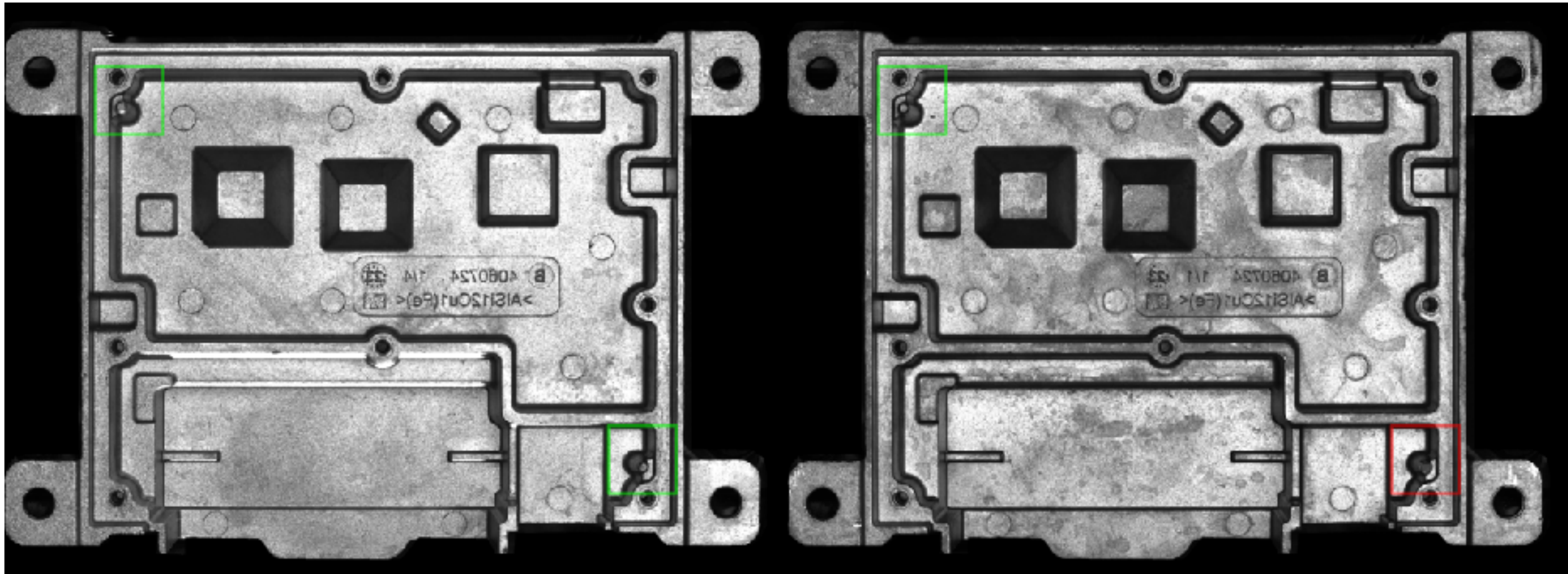
Red-highlighted areas indicate detected anomalies.

This model is particularly effective in identifying **material shortages** and **macroscopic defects**.



Pin inspections

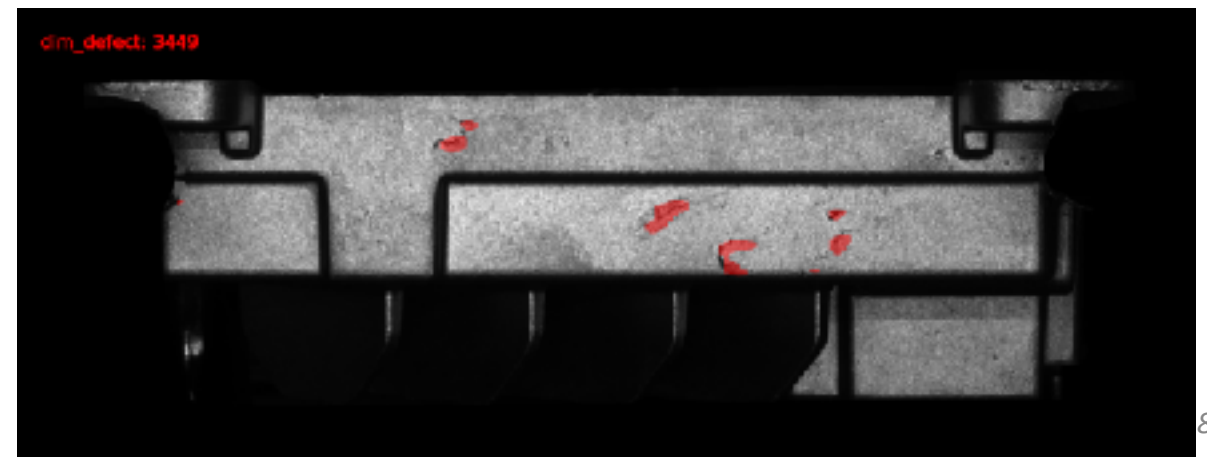
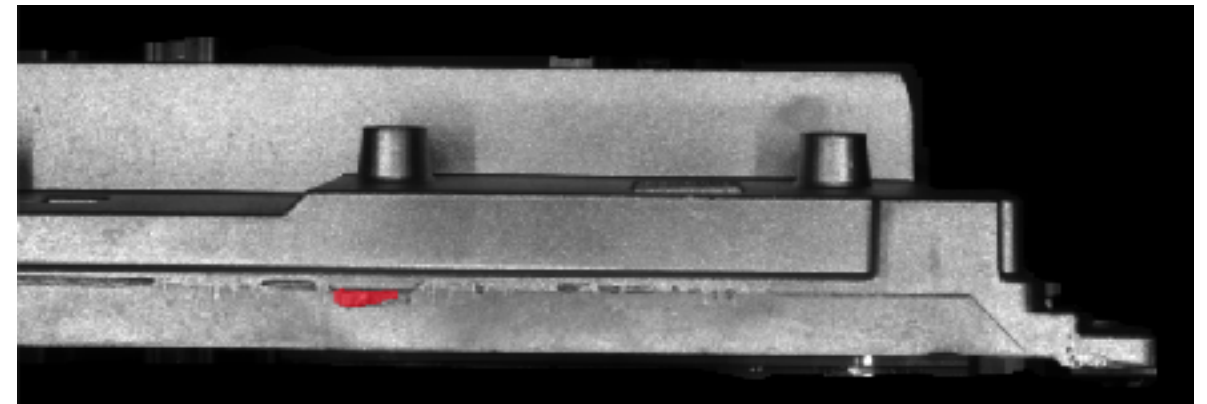
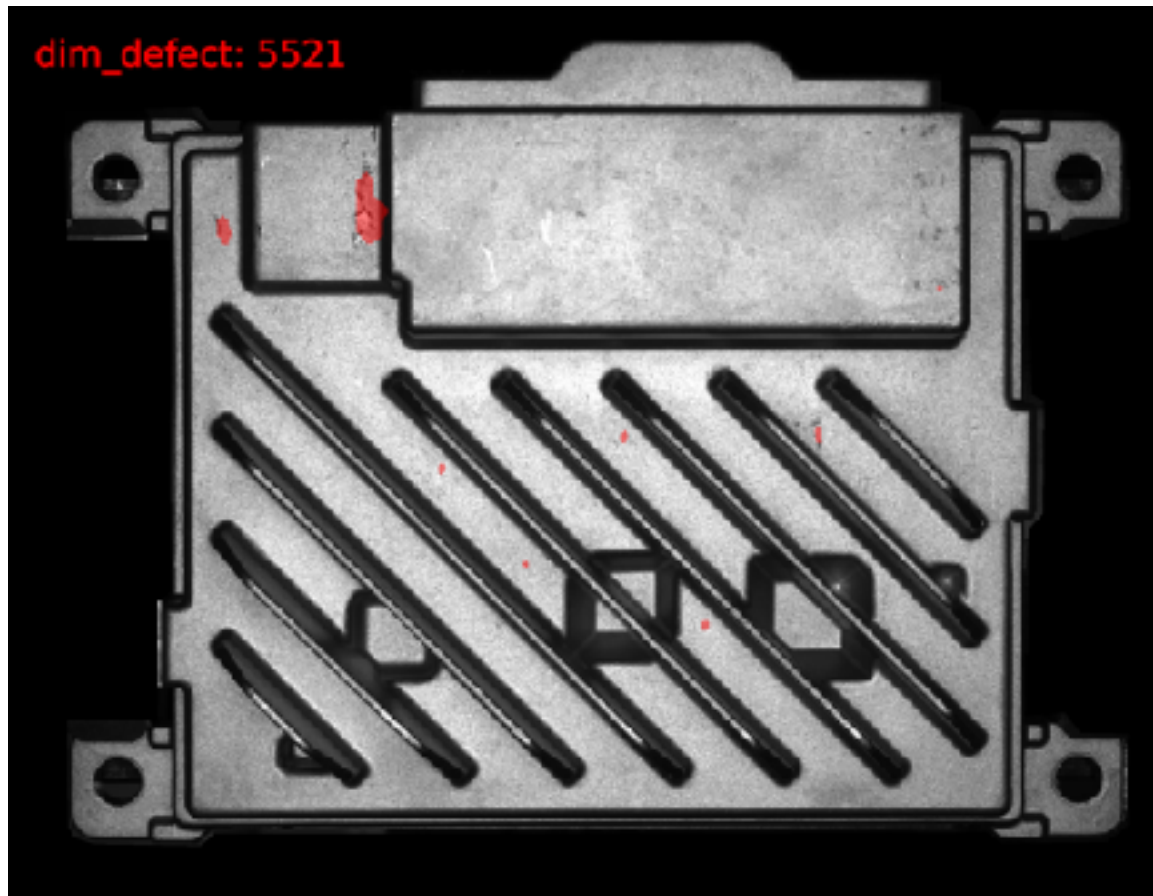
- Check for **pin presence** and **integrity**.
- **Green boxes** indicate intact pins, while red boxes highlight damaged ones.



Defect identification

Identification of specific defects as burrs and foils

The segmation highlights pixel per pixel the defects.



Use Cases: Internal inspection of raw foundry pieces

Internal inspection of raw foundry pieces.

Two type of boroscopes:

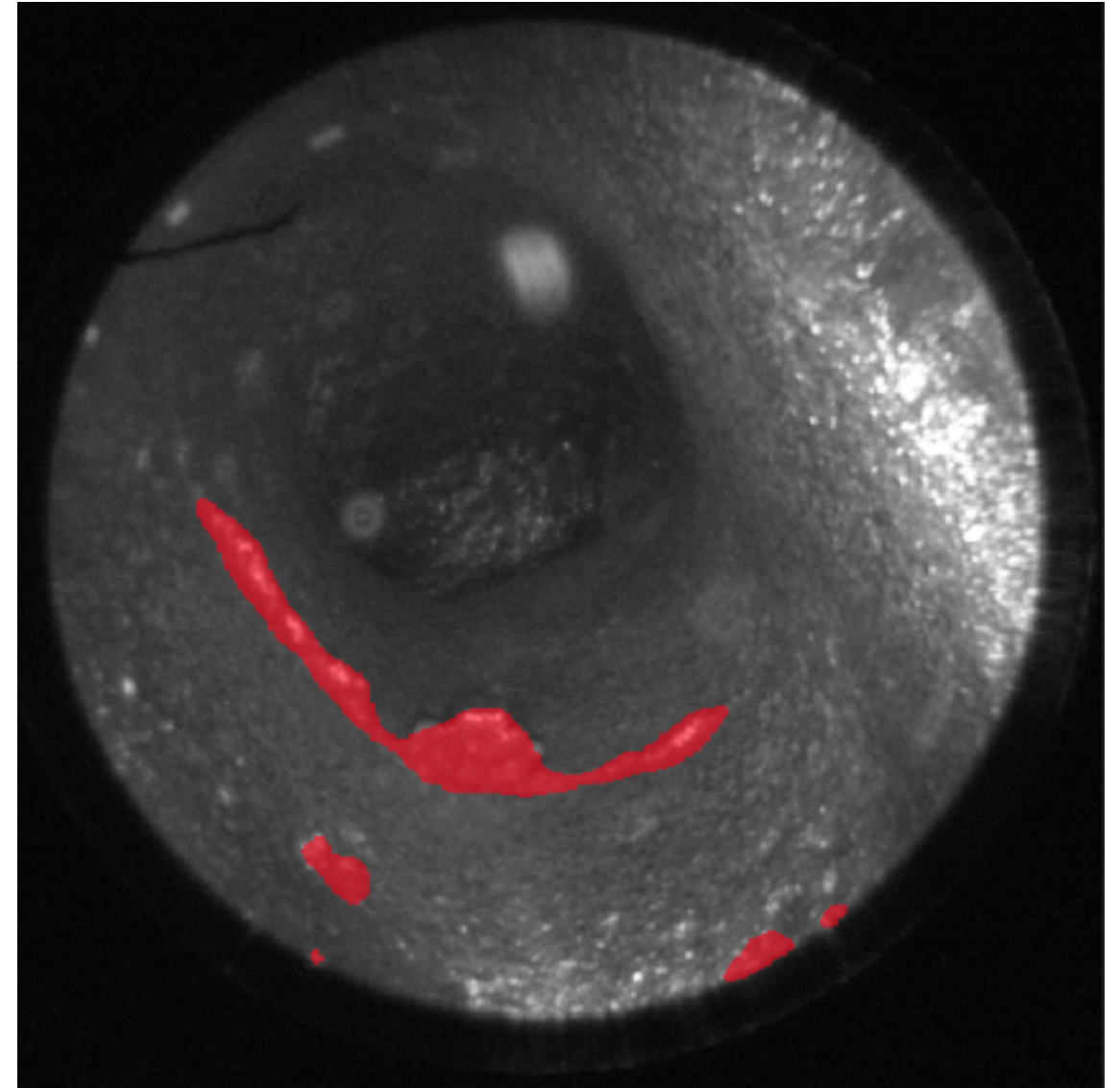
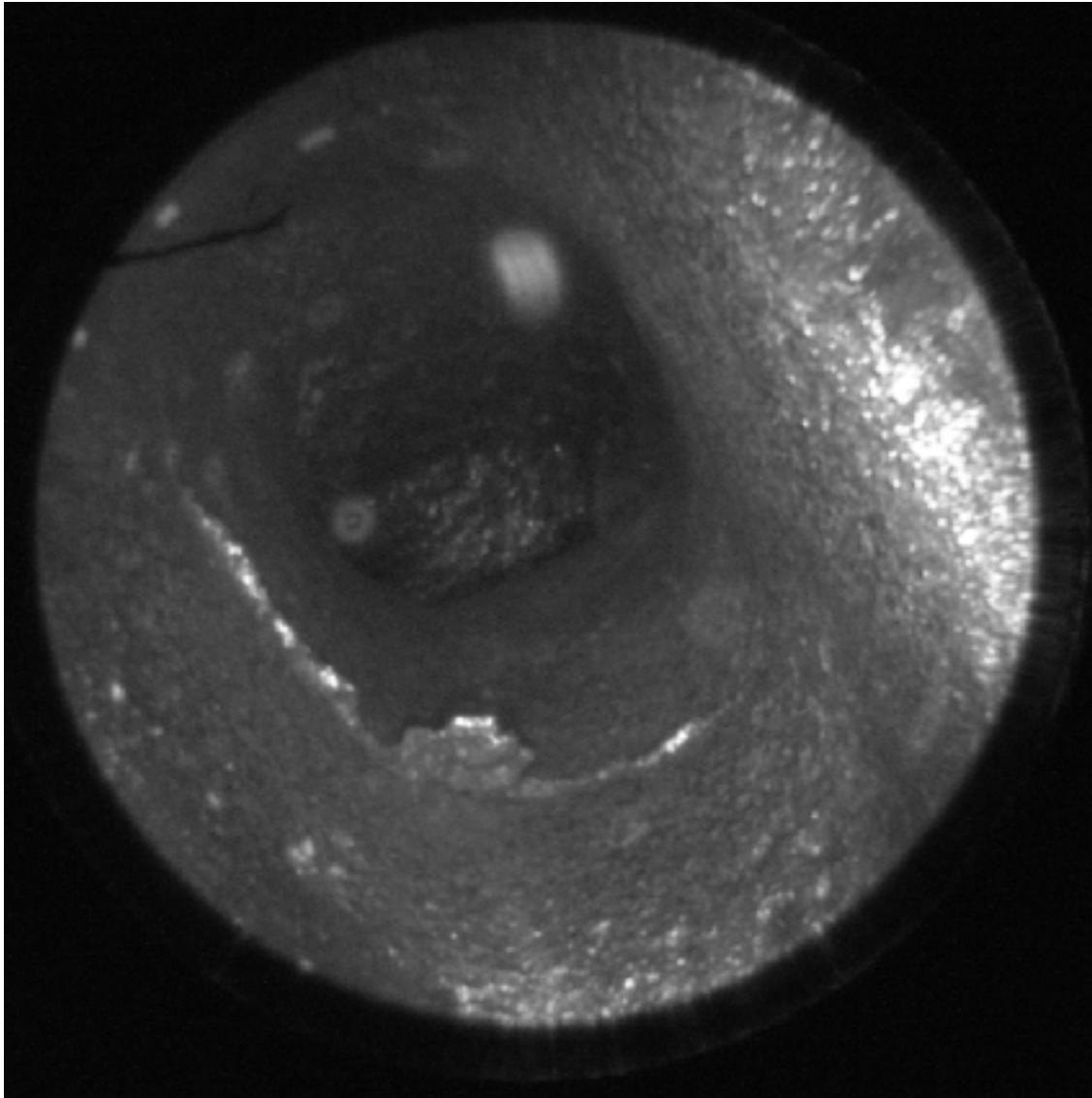
- 0° degrees
- 90° degrees

Defects:

- Ridge inside the holes

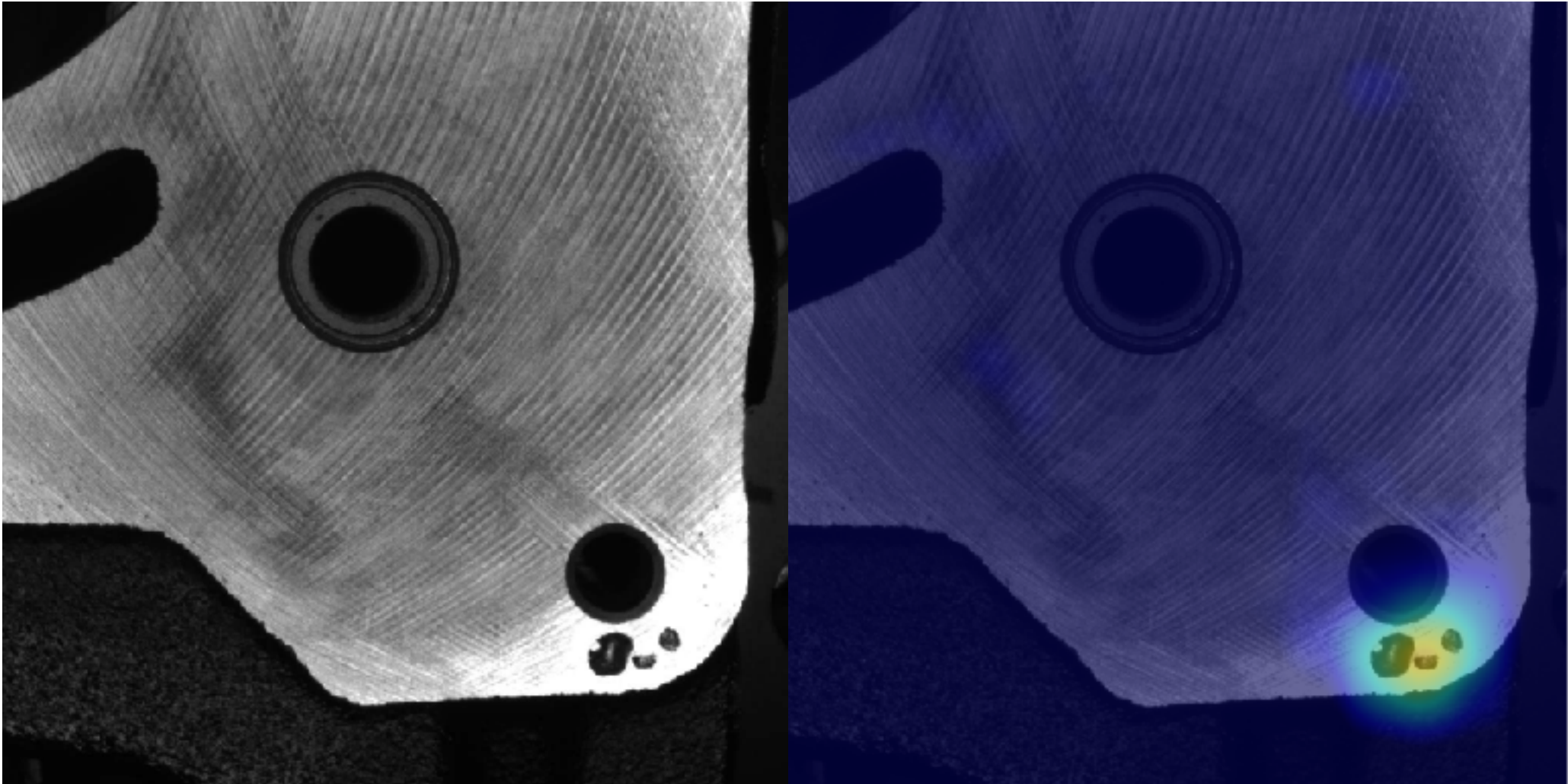


Use Cases: Internal inspection of raw foundry pieces



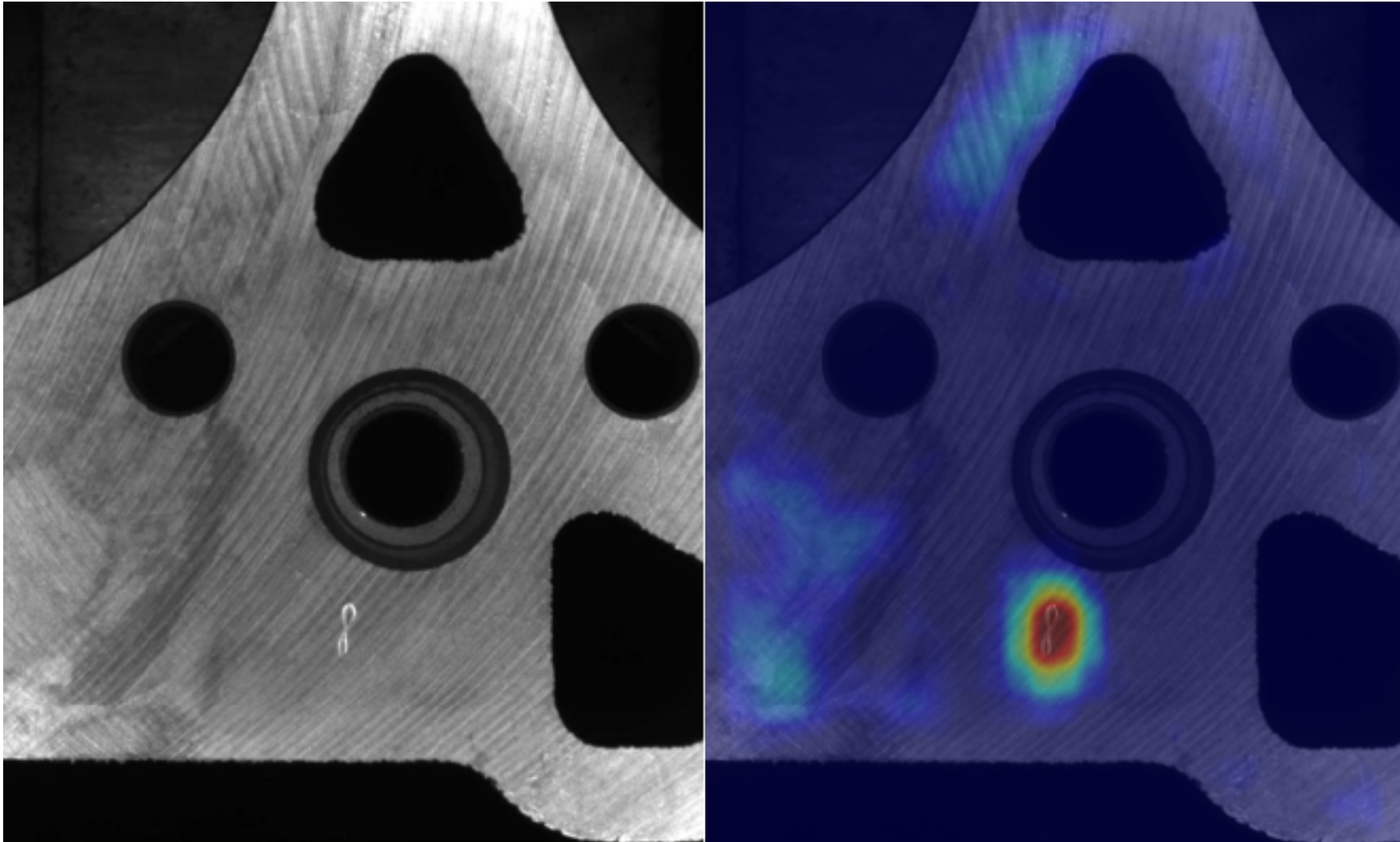
Use Case: Anomaly Detection on engine blocks

Artificial Intelligence model trained only on GOOD images. It highlights all the anomalies/defects in the image



Use Case: Anomaly Detection on engine blocks

Artificial Intelligence model trained only on GOOD images. It highlights all the anomalies/defects in the image





BUFFOLI INDUSTRIES

BUFFOLI[®]
BUFFOLI TRANSFER Sp.A

BUFFOLI[®]
BUFFOLI MECCANISMI S.r.L.



BUFFOLI[®]
NORTH AMERICA Inc.


BUFFOLI[®]
DEUTSCHLAND